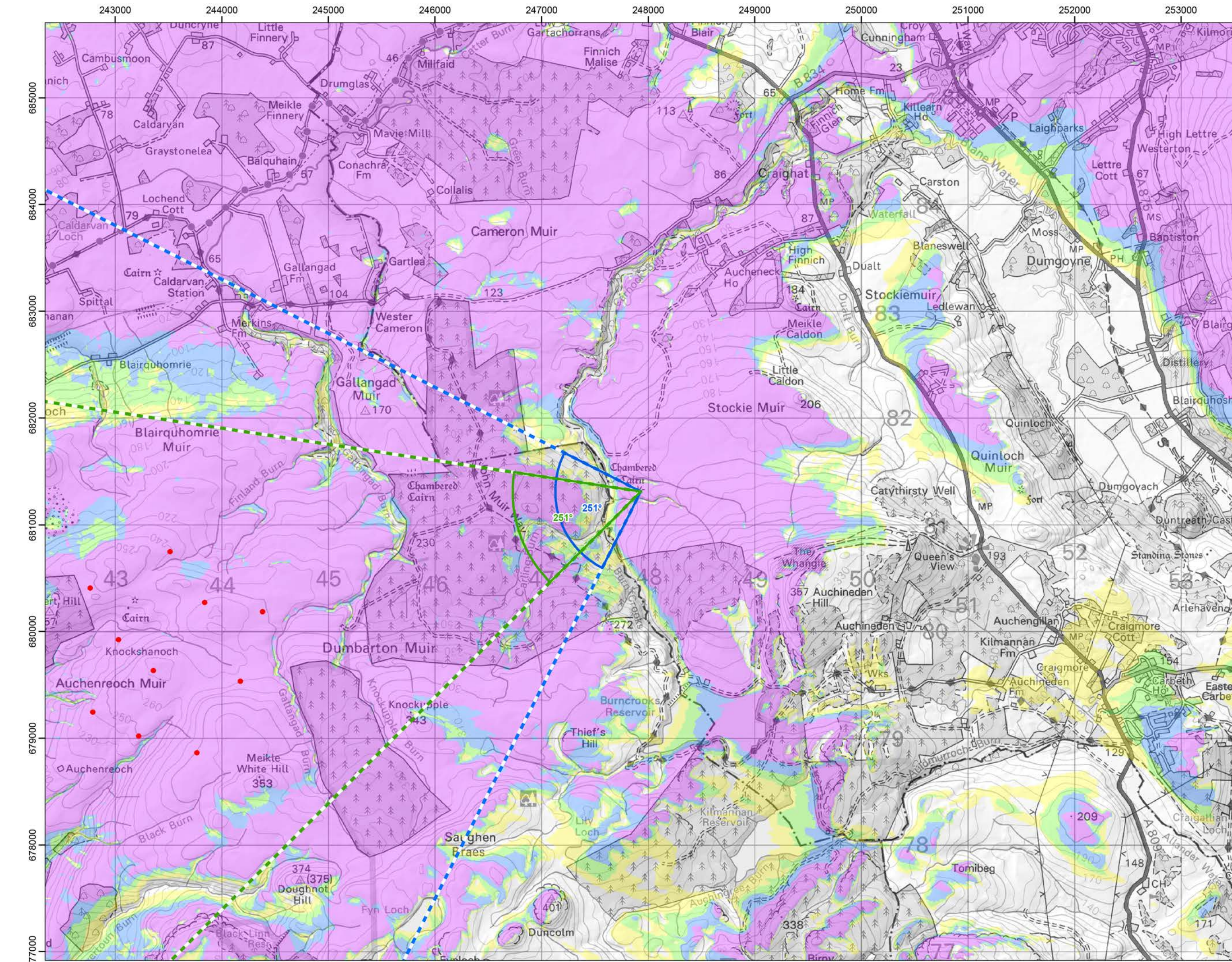


Cumulative Wind Farms and Location Plan 1:470,000 Scale



Viewpoint Location Plan with Horizontal Field of View 1:25,000 Scale

Legend:

- Proposed Turbines
- 10km Radii
- 45km Radii
- Viewpoint

Cumulative Wind Farm Status

- Operational
- Under Construction
- Consented
- Appeal/Application

Photomontage and Wireline (53.5°HFOV)

- Panorama with Wireline (90°HFOV)

No. of Blade Tips Theoretically Visible

- 1 - 3
- 4 - 6
- 7 - 9
- 10

Tip Height: 250m
Observer Height: 2m
DTM: OS 1:50 DTM
Surface Features: Excluded
DTM Resolution: 10m
Earth Curvature: Included

Coordinate System: British National Grid
Projection: Transverse Mercator
Datum: OSGB 1936
Units: Meter

Rev	Date	Description	Drn	Chk	App
01	19/07/2023	First Draft	NL	AW	JW

Vale of Leven Wind Farm

RSK Coriolis Energy

TITLE: Figure 10.5a Viewpoint Plan
Cultural Heritage Viewpoint 3:
View from SM2281 Stockie Muir, long cairn
2000m NNW of Burncrooks Reservoir

ID: P663510_TAG000_Layout_A3_L

0 20 40
Kilometres
SCALE: 1:350,000 @ A3

REV 00

Wire Only

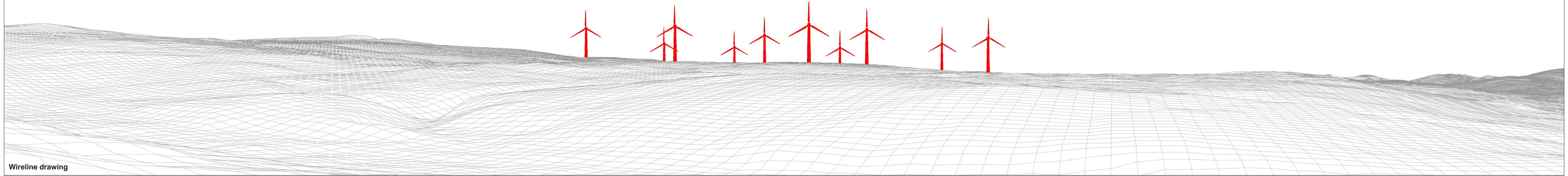
© OpenStreetMap (and) contributors, CC-BY-SA © Crown copyright and database rights (2023) Ordnance Survey 0100031673. Contains OS data © Crown copyright and database right (2023). Contains public sector information licensed under the Open Government Licence v3.0.

Document Path: P:\02\1211689_ValeofLevenGIS\211689_ValeofLevenGIS\211689_VOL_LVA_VP_CH_Plan.mxd

No Photography | Wireline only View



Proposed Development (3.7km)



Wireline drawing

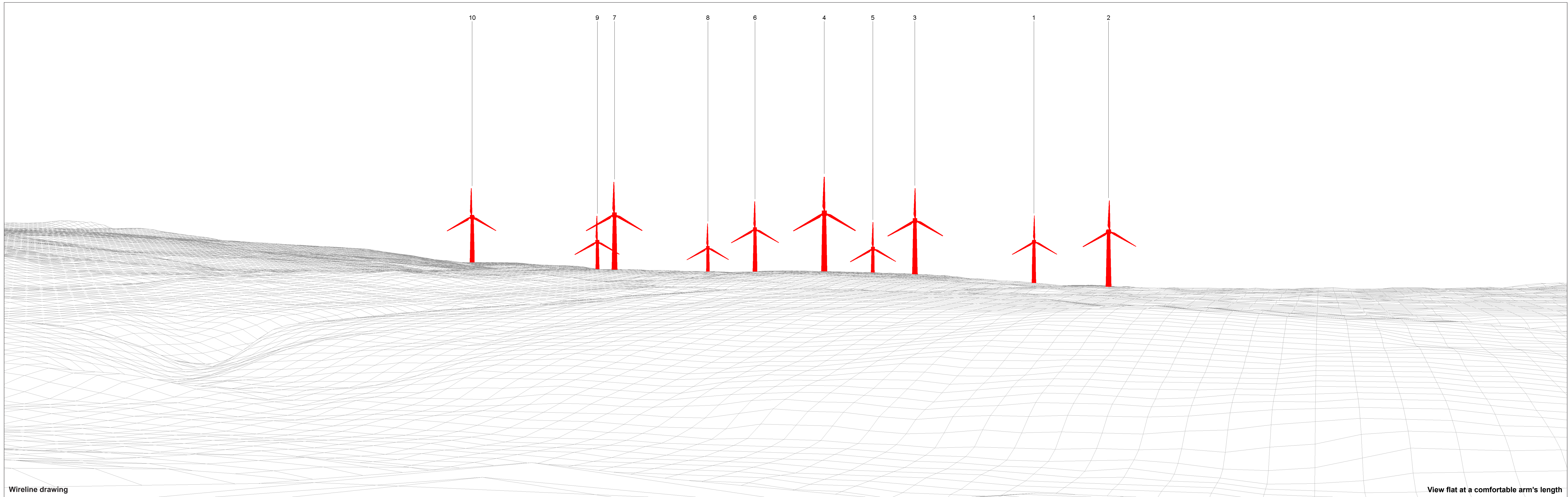
OS reference:	247929 E 681311 N	Horizontal field of view:	90° (cylindrical projection)	Camera:	N/A
Eye level:	185.9 mAOD	Principal distance:	522 mm	Lens:	N/A
Direction of view:	251°	Paper size:	841 x 297 mm (half A1)	Camera height:	1.5 m
Nearest turbine:	3.72 km	Correct printed image size:	820 x 130 mm	Date and time:	N/A

Viewpoint 3: View from SM2281 Stockie Muir, long cairn 2000m NNW of Burncrooks Reservoir

Figure: 10.5b

Vale of Leven Wind Farm

© Crown copyright. All rights reserved (2023). Licence number 0100031673



Wireline drawing

View flat at a comfortable arm's length

OS reference: 247929 E 681311 N
 Eye level: 185.9 mAOD
 Direction of view: 251°
 Nearest turbine: 3.72 km

Horizontal field of view: 53.5° (planar projection)
 Principal distance: 812.5 mm
 Paper size: 841 x 297 mm (half A1)
 Correct printed image size: 820 x 260 mm

Camera: N/A
 Lens: N/A
 Camera height: 1.5 m
 Date and time: N/A

Viewpoint 3: View from SM2281 Stockie Muir, long cairn 2000m NNW of Burncrooks Reservoir

Vale of Leven Wind Farm

© Crown copyright. All rights reserved (2023). Licence number 0100031673

Figure: 10.5c