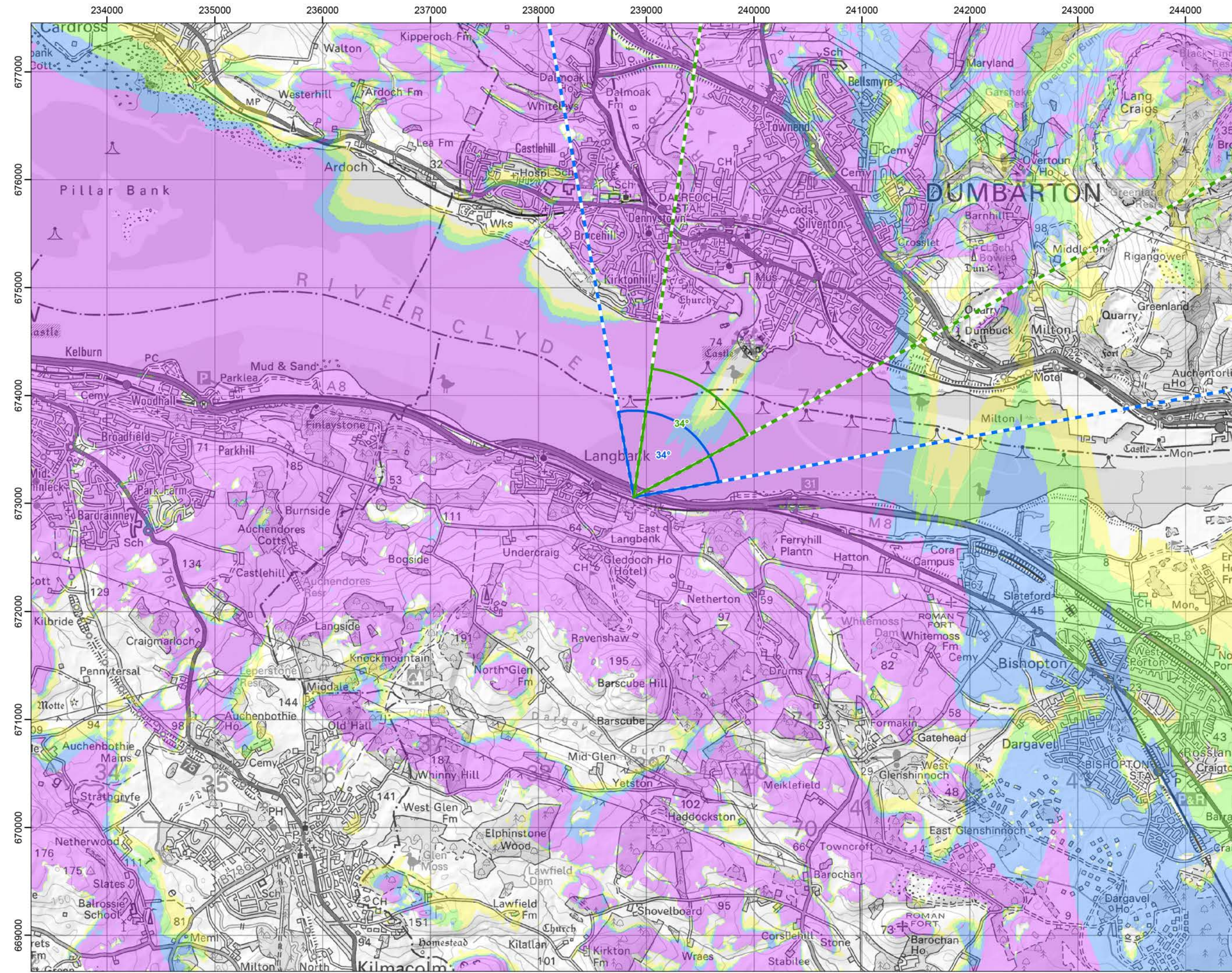


Cumulative Wind Farms and Location Plan 1:470,000 Scale



Viewpoint Location Plan with Horizontal Field of View 1:25,000 Scale

Legend:

- Proposed Turbines
- 10km Radii
- 45km Radii
- Viewpoint

Cumulative Wind Farm Status

- Operational
- Under Construction
- Consented
- Appeal/Application

Photomontage and Wireline (53.5°HFOV)

- Panorama with Wireline (90°HFOV)

No. of Blade Tips Theoretically Visible

- 1 - 3
- 4 - 6
- 7 - 9
- 10

Tip Height: 250m
Observer Height: 2m
DTM: OS 1:50 DTM
Surface Features: Excluded
DTM Resolution: 10m
Earth Curvature: Included

Coordinate System: British National Grid
Datum: OSGB 1936
Units: Meter

Rev	Date	Description	Drn	Chk	App
01	19/07/2023	First Draft	NL	AW	JW

Vale of Leven Wind Farm

RSK **Coriolis Energy**

TITLE: Figure 10.7a Viewpoint Plan
Cultural Heritage Viewpoint 5:
View towards SM90107 Dumbarton Castle from
Langbank

ID: P663510_TAG000_Layout_A3_L

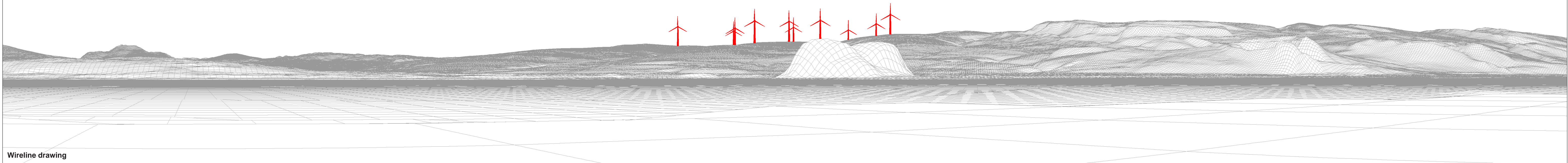
0 20 40
Kilometres
SCALE: 1:350,000 @ A3

REV 00

Montage included

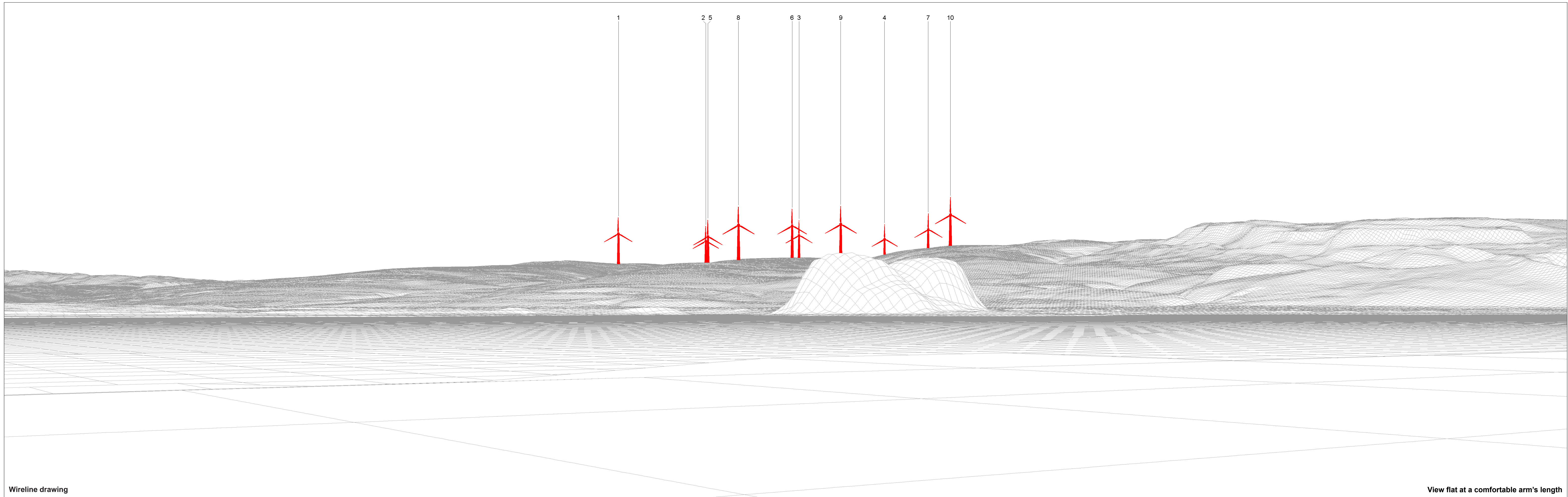


Proposed Development (7.3km)



OS reference: 238883 E 673059 N	Horizontal field of view: 90° (cylindrical projection)	Camera: Canon EOS 6D MKI
Eye level: 7.6 mAOD	Principal distance: 522 mm	Lens: Canon EF 50mm f/1.4
Direction of view: 34°	Paper size: 841 x 297 mm (half A1)	Camera height: 1.5 m
Nearest turbine: 7.32 km	Correct printed image size: 820 x 130 mm	Date and time: 20.04.2023 09:28

Figure: 10.7b
Viewpoint 5: View towards SM90107 Dumbarton Castle from Langbank
Vale of Leven Wind Farm
© Crown copyright. All rights reserved (2023). Licence number 0100031673



Wireline drawing

View flat at a comfortable arm's length

OS reference: 238883 E 673059 N
 Eye level: 7.6 mAOD
 Direction of view: 34°
 Nearest turbine: 7.32 km

Horizontal field of view: 53.5° (planar projection)
 Principal distance: 812.5 mm
 Paper size: 841 x 297 mm (half A1)
 Correct printed image size: 820 x 260 mm

Camera: Canon EOS 6D MKI
 Lens: Canon EF 50mm f/1.4
 Camera height: 1.5 m
 Date and time: 20.04.2023 09:28

Figure: 10.7c
 Viewpoint 5: View towards SM90107 Dumbarton Castle from Langbank
 Vale of Leven Wind Farm
© Crown copyright. All rights reserved (2023). Licence number 0100031673



Photomontage: Proposed Development

View flat at a comfortable arm's length

OS reference: 238883 E 673059 N	Horizontal field of view: 53.5° (planar projection)	Camera: Canon EOS 6D MKI
Eye level: 7.6 mAOD	Principal distance: 812.5 mm	Lens: Canon EF 50mm f/1.4
Direction of view: 34°	Paper size: 841 x 297 mm (half A1)	Camera height: 1.5 m
Nearest turbine: 7.32 km	Correct printed image size: 820 x 260 mm	Date and time: 20.04.2023 09:28

Figure: 10.7d
Viewpoint 5: View towards SM90107 Dumbarton Castle from Langbank
 Vale of Leven Wind Farm
© Crown copyright. All rights reserved (2023). Licence number 0100031673