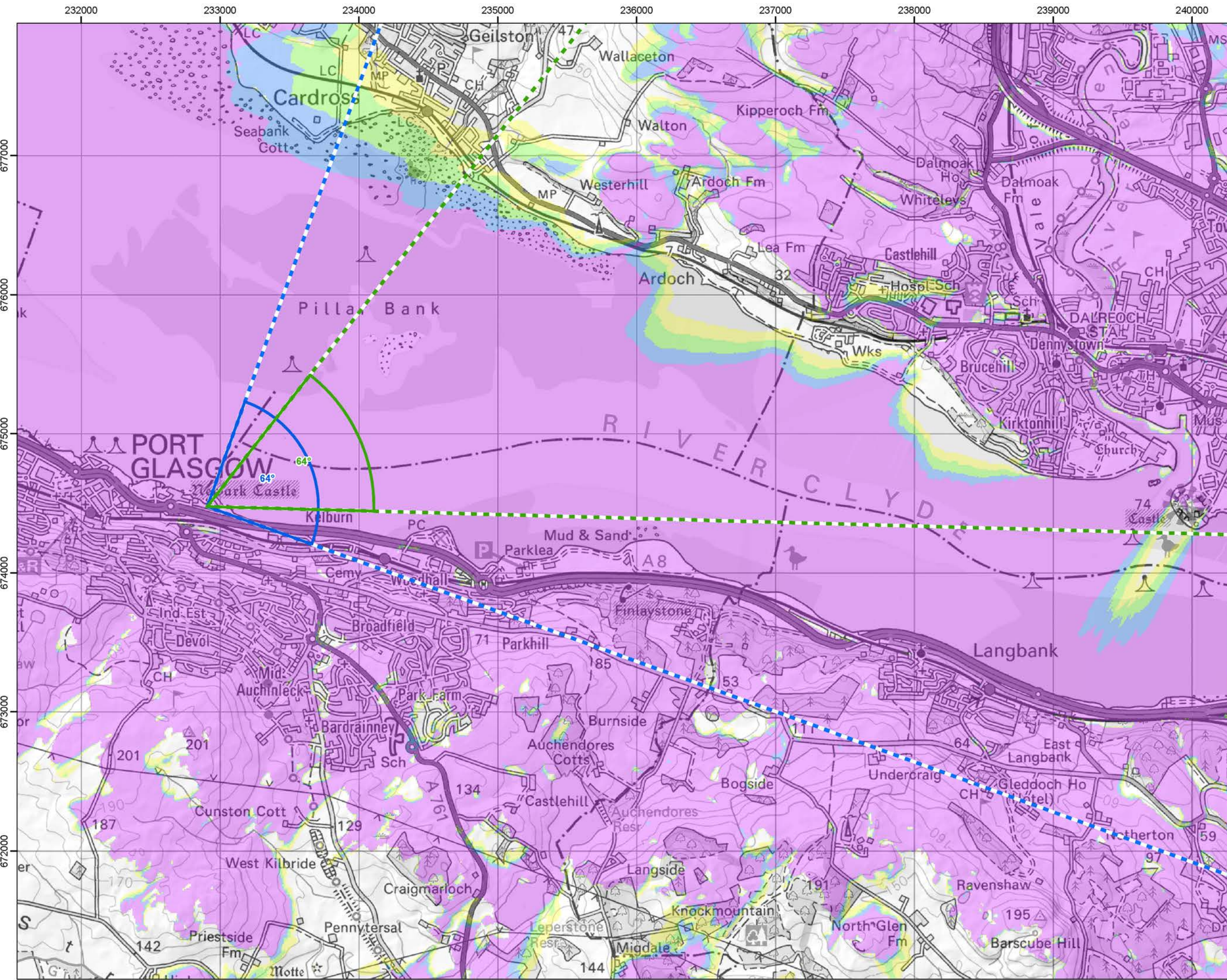


Cumulative Wind Farms and Location Plan 1:470,000 Scale



Viewpoint Location Plan with Horizontal Field of View 1:25,000 Scale

Legend:

- Proposed Turbines
- 10km Radii
- 45km Radii
- Viewpoint

Cumulative Wind Farm Status

- Operational
- Under Construction
- Consented
- Appeal/Application

No. of Blade Tips Theoretically Visible

- 1 - 3
- 4 - 6
- 7 - 9
- 10

Photomontage and Wireline (53.5°HFOV)

Panorama with Wireline (90°HFOV)

Tip Height: 250m
Observer height: 2m
DTM: OS 15/750 DTM
Surface features: Excluded
DTM resolution: 10m
Earth curvature: Included

Coordinate System: British National Grid
Projection: Transverse Mercator
Datum: OSGB 1936
Units: Meter

Rev	Date	Description	Drn	Chk	App
01	24/08/2023	First Draft	NL	AW	JW

Vale of Leven Wind Farm

RSK **Coriolis Energy**

TITLE: Figure 10.7e Viewpoint Plan
Cultural Heritage Viewpoint 5a:
View towards SM90107 Dumbarton Castle from Newark Castle

ID: P063510_TAG000_Layout_A3_L

0 0.5 1
Kilometres
SCALE: 1:350,000 @ A3

REV 00

Montage included

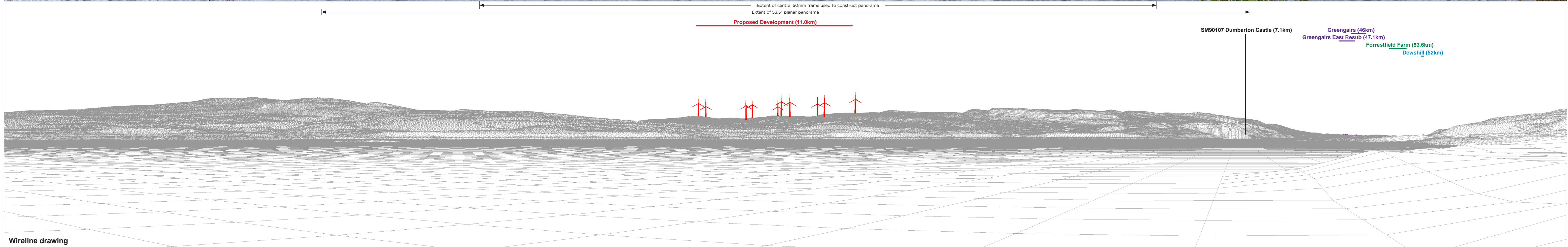
© OpenStreetMap (and) contributors, CC-BY-SA © Crown copyright and database rights (2023) Ordnance Survey 0100031673. Contains OS data © Crown copyright and database right (2023). Contains public sector information licensed under the Open Government Licence v3.0.

Document Path: P:\002\1211689_ValeofLevenGIS\1211689_ValeofLeven_Vol_LVA_VP_CH_Plan.mxd



Baseline photograph

This image provides landscape and visual context only

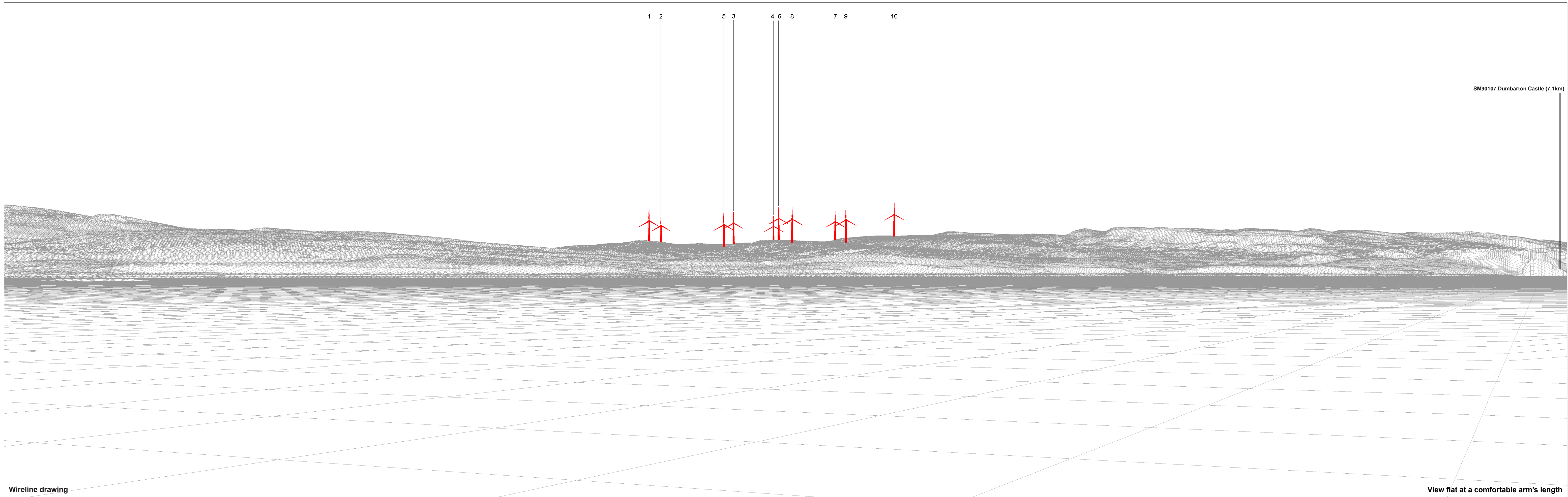


Wireline drawing

OS reference: 232907 E 674478 N	Horizontal field of view: 90° (cylindrical projection)	Camera: Canon EOS 5D MKII
Eye level: 5.2 mAOD	Principal distance: 522 mm	Lens: Canon EF 50mm f/1.4
Direction of view: 64°	Paper size: 841 x 297 mm (half A1)	Camera height: 1.5 m
Nearest turbine: 10.97 km	Correct printed image size: 820 x 130 mm	Date and time: 18.08.2023 13:25

Viewpoint 5a: View towards SM90107 Dumbarton Castle from Newark Castle
Figure: 10.7f
 Vale of Leven Wind Farm

© Crown copyright. All rights reserved (2023). Licence number 0100031673



Wireline drawing

View flat at a comfortable arm's length

OS reference: 232907 E 674478 N
 Eye level: 5.2 mAOD
 Direction of view: 64°
 Nearest turbine: 10.97 km

Horizontal field of view: 53.5° (planar projection)
 Principal distance: 812.5 mm
 Paper size: 841 x 297 mm (half A1)
 Correct printed image size: 820 x 260 mm

Camera: Canon EOS 5D MKII
 Lens: Canon EF 50mm f/1.4
 Camera height: 1.5 m
 Date and time: 18.08.2023 13:25

Viewpoint 5a: View towards SM90107 Dumbarton Castle from Newark Castle

Vale of Leven Wind Farm

© Crown copyright. All rights reserved (2023). Licence number 0100031673

Figure: 10.7g



Photomontage: Proposed Development

View flat at a comfortable arm's length

OS reference: 232907 E 674478 N	Horizontal field of view: 53.5° (planar projection)	Camera: Canon EOS 5D MKII
Eye level: 5.2 mAOD	Principal distance: 812.5 mm	Lens: Canon EF 50mm f/1.4
Direction of view: 64°	Paper size: 841 x 297 mm (half A1)	Camera height: 1.5 m
Nearest turbine: 10.97 km	Correct printed image size: 820 x 260 mm	Date and time: 18.08.2023 13:25

Figure: 10.7h
 Viewpoint 5a: View towards SM90107 Dumbarton Castle from Newark Castle
 Vale of Leven Wind Farm
© Crown copyright. All rights reserved (2023). Licence number 0100031673