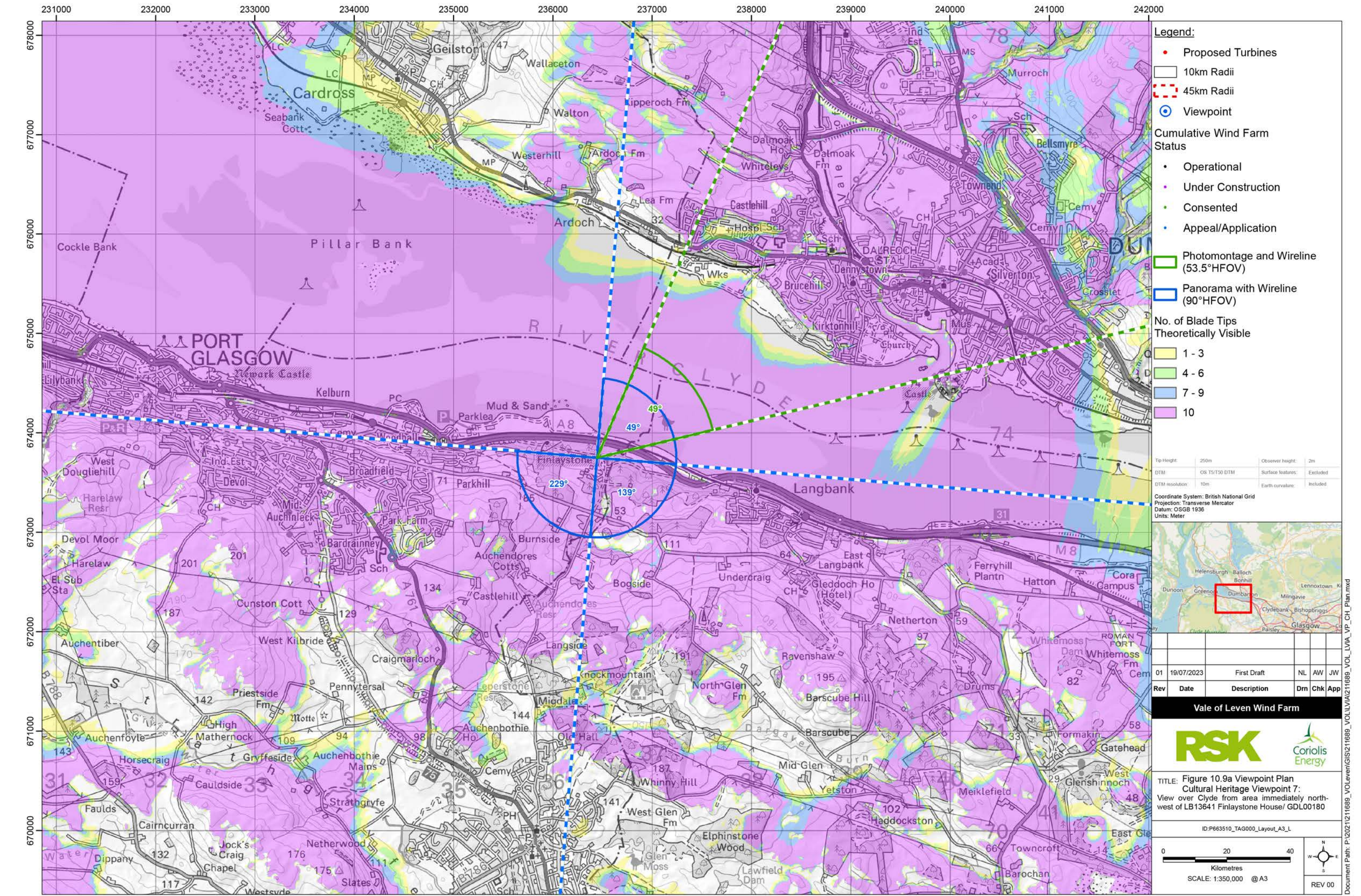


© OpenStreetMap (and) contributors, CC-BY-SA © Crown copyright and database rights (2023) Ordnance Survey 0100031673. Contains OS data © Crown copyright and database right (2023). Contains public sector information licensed under the Open Government Licence v3.0.

Cumulative Wind Farms and Location Plan 1:470,000 Scale



Legend:

- Proposed Turbines
- 10km Radii
- 45km Radii
- ⊙ Viewpoint

Cumulative Wind Farm Status

- Operational
- Under Construction
- Consented
- Appeal/Application

No. of Blade Tips Theoretically Visible

- 1 - 3
- 4 - 6
- 7 - 9
- 10

Photomontage and Wireline (53.5°HFOV)

Panorama with Wireline (90°HFOV)

Tip Height: 250m
Observer Height: 2m
DTM: OS T5/150 DTM
Surface Features: Excluded
DTM Resolution: 10m
Earth Curvature: Included

Coordinate System: British National Grid
Projection: Transverse Mercator
Datum: OSGB 1936
Units: Meter

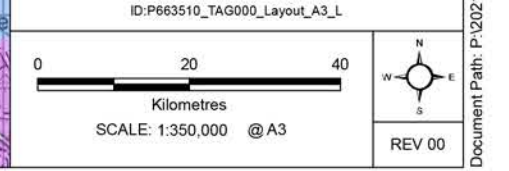


Rev	Date	Description	Drn	Chk	App
01	19/07/2023	First Draft	NL	AW	JW

Vale of Leven Wind Farm

RSK **Coriolis Energy**

TITLE: Figure 10.9a Viewpoint Plan
Cultural Heritage Viewpoint 7:
View over Clyde from area immediately north-west of LB13641 Finlaystone House/ GDL00180



Viewpoint Location Plan with Horizontal Field of View 1:25,000 Scale Wire Only

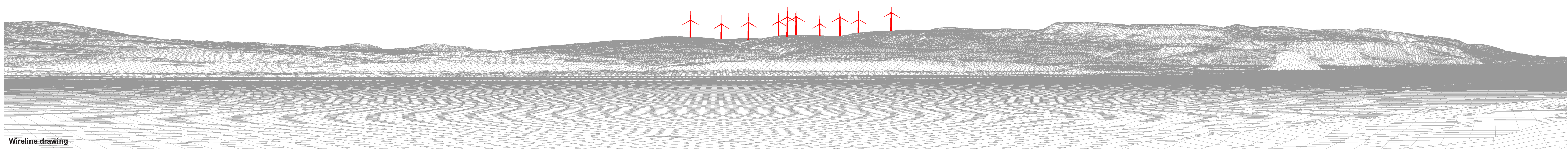
No Photography | Wireline only View



Extent of 53.5° planar wire

Proposed Development (8.4km)

Greendykeside (45km)



Wireline drawing

OS reference: 236443 E 673749 N
Eye level: 35.5 mAOD
Direction of view: 49°
Nearest turbine: 8.40 km

Horizontal field of view: 90° (cylindrical projection)
Principal distance: 522 mm
Paper size: 841 x 297 mm (half A1)
Correct printed image size: 820 x 130 mm

Camera: N/A
Lens: N/A
Camera height: 1.5 m
Date and time: N/A

Viewpoint 7: View over Clyde from area immediately north-west of LB13641 Finlaystone House/ GDL00180

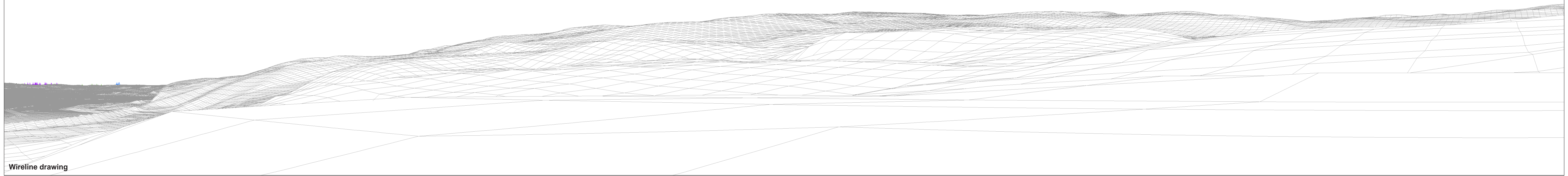
Figure: 10.9b

Vale of Leven Wind Farm

© Crown copyright. All rights reserved (2023). Licence number 0100031673

No Photography | Wireline only View

Greengairs (42.4km) Forrestdale Farm (50km)
Greendykeside (45km) Dewshill (48.4km)
Greengairs East Resub (43.5km)



Wireline drawing

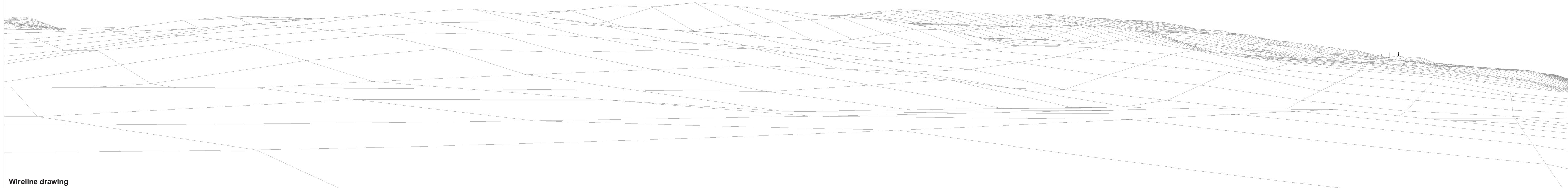
OS reference:	236443 E 673749 N	Horizontal field of view:	90° (cylindrical projection)	Camera:	N/A
Eye level:	35.5 mAOD	Principal distance:	522 mm	Lens:	N/A
Direction of view:	139°	Paper size:	841 x 297 mm (half A1)	Camera height:	1.5 m
Nearest turbine:	8.40 km	Correct printed image size:	820 x 130 mm	Date and time:	N/A

Viewpoint 7: View over Clyde from area immediately north-west of LB13641 Finlaystone House/ GDL00180

Figure: 10.9c

No Photography | Wireline only View

Corlic Hill (Inverclyde) (6.5km)



Wireline drawing

OS reference: 236443 E 673749 N
Eye level: 35.5 mAOD
Direction of view: 229°
Nearest turbine: 8.40 km

Horizontal field of view: 90° (cylindrical projection)
Principal distance: 522 mm
Paper size: 841 x 297 mm (half A1)
Correct printed image size: 820 x 130 mm

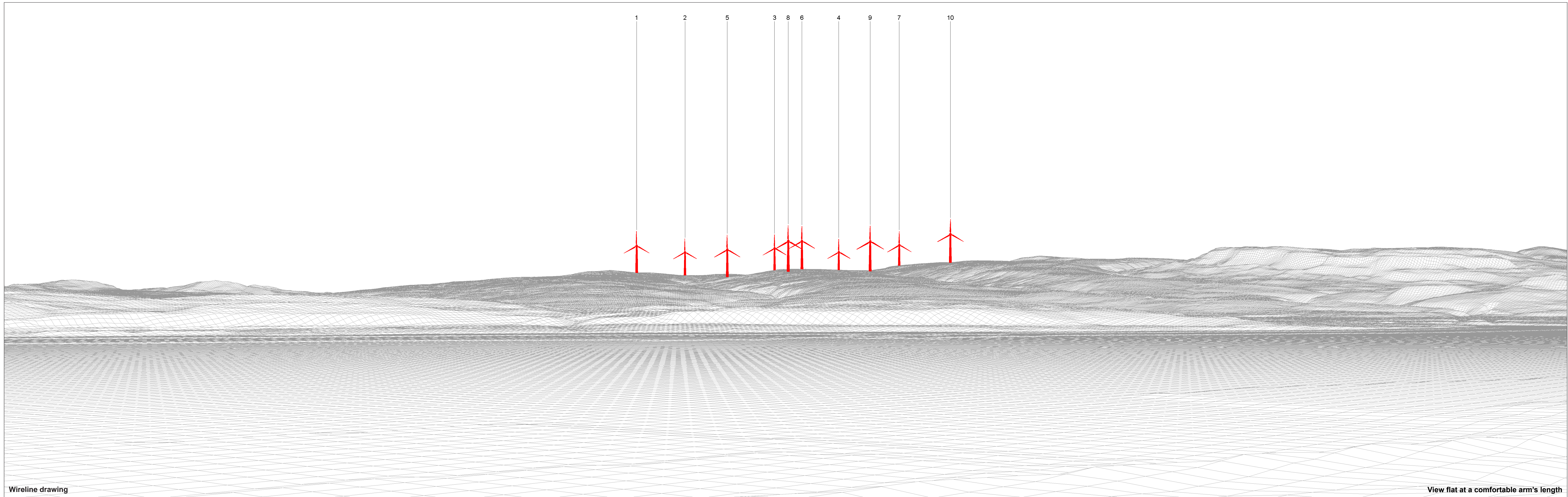
Camera: N/A
Lens: N/A
Camera height: 1.5 m
Date and time: N/A

Viewpoint 7: View over Clyde from area immediately north-west of LB13641 Finlaystone House/ GDL00180

Figure: 10.9d

Vale of Leven Wind Farm

© Crown copyright. All rights reserved (2023). Licence number 0100031673



Wireline drawing

View flat at a comfortable arm's length

OS reference: 236443 E 673749 N
 Eye level: 35.5 mAOD
 Direction of view: 49°
 Nearest turbine: 8.40 km

Horizontal field of view: 53.5° (planar projection)
 Principal distance: 812.5 mm
 Paper size: 841 x 297 mm (half A1)
 Correct printed image size: 820 x 260 mm

Camera: N/A
 Lens: N/A
 Camera height: 1.5 m
 Date and time: N/A

Viewpoint 7: View over Clyde from area immediately north-west of LB13641 Finlaystone House/ GDL00180

Vale of Leven Wind Farm

© Crown copyright. All rights reserved (2023). Licence number 0100031673

Figure: 10.9e