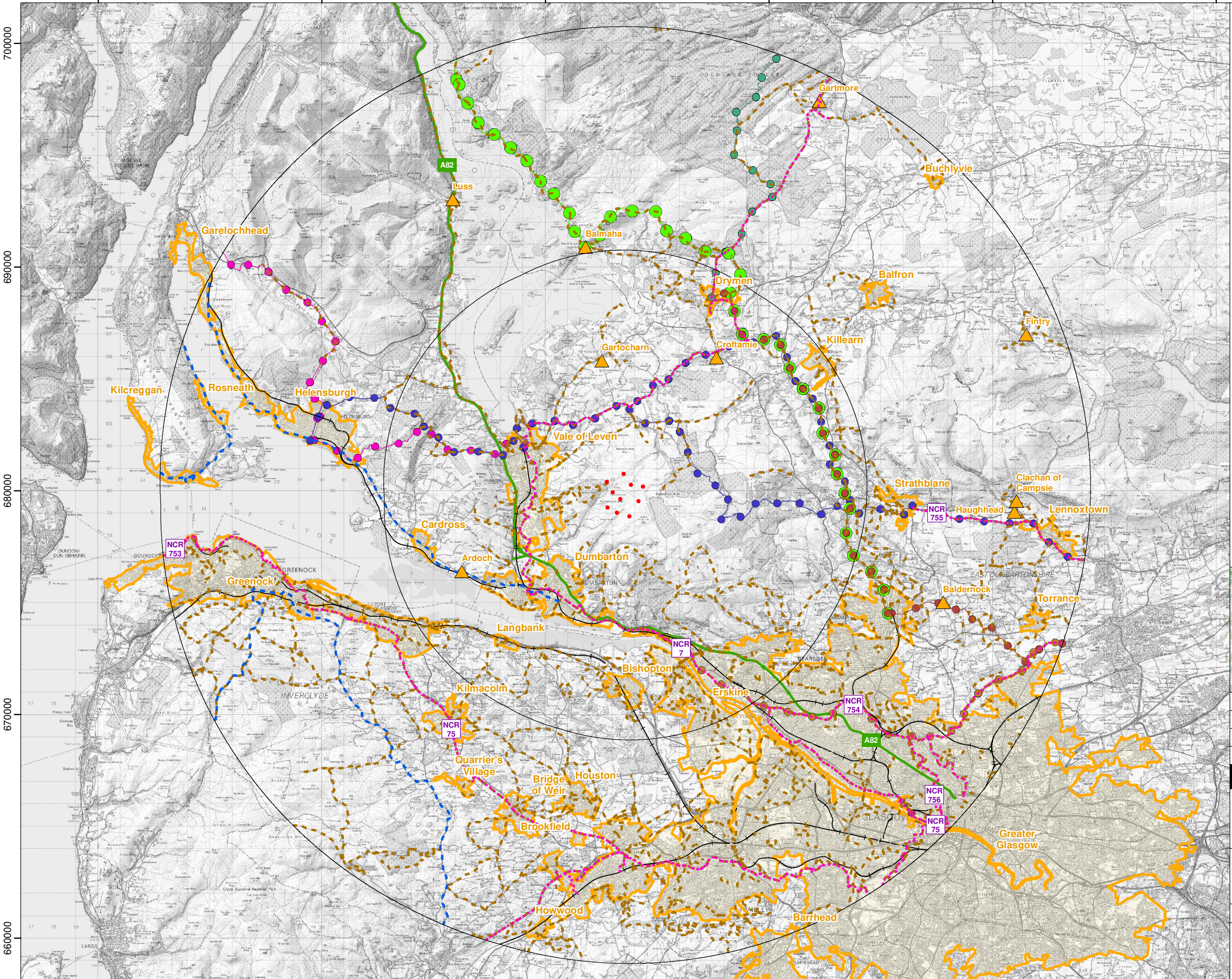


220000 230000 240000 250000 260000 270000



- Legend:**
- Proposed Turbines
 - 10km Radii
 - - - Core Path
 - - - Scenic Driving Routes
 - Railway
 - - - National Cycle Route (NCR)
 - A Road
 - Clyde Walkway
 - - - Forth & Clyde and Union Canal Towpaths
 - John Muir Way
 - Rob Roy Way
 - Scottish National Trail
 - - - Three Lochs Way
 - West Highland Way
 - ▲ Small Settlements
 - Medium to Large Settlement Areas (National Records of Scotland 2018)

Coordinate System: British National Grid
 Projection: Transverse Mercator
 Datum: OSGB 1936
 Units: Meter



| Rev | Date | Description | Drn | Chk | App |
|-----|------------|-------------|-----|-----|-----|
| 01 | 25/09/2023 | First Draft | SH | AW | JW |

Vale of Leven Wind Farm



TITLE: Figure 5.6b
 Principal Visual Receptors
 (20km Radius)

ID:P663510_TAG000_Layout_A3_L

