

Legend:

- Proposed Turbines
- 10km Radii
- 45km Study Area

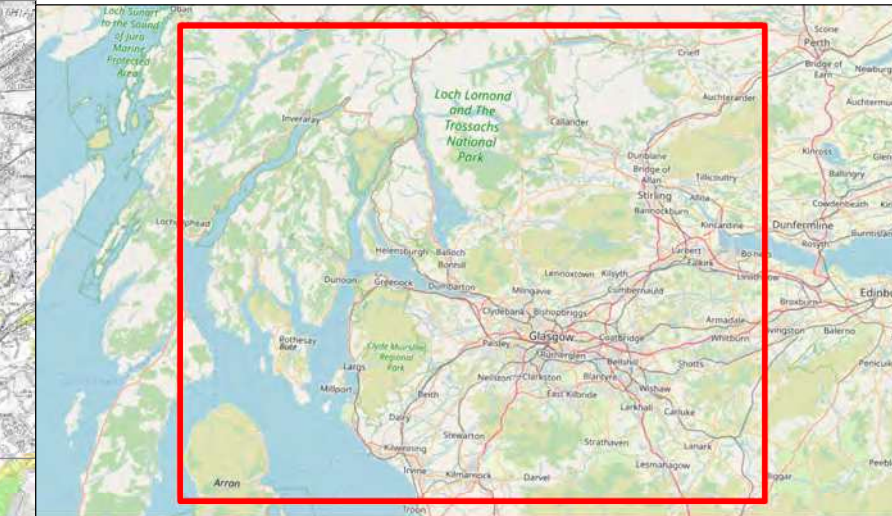
No. of Hubs Theoretically Visible

- 1 - 3
- 4 - 6
- 7 - 9
- 10

○ Viewpoint

- | | |
|---|-------------------------|
| 1. Doughnot Hill | 23. Luss Campsite |
| 2. Minor road (John Muir Way/NCR 7) north of site | 24. Sallochy |
| 3. A82 near Bellsmyre Roundabout (A813 junction) | 25. Lyle Hill, Greenock |
| 4. Balloch Country Park access road | 26. Beinn Dubh |
| 5. A811 Near Balloch | 27. Inverbeg |
| 6. The Whangie | 28. Misty Law |
| 7. Duncryne Hill | 29. Ben Lomond |
| 8. Dumbarton Rock | 30. Dunoon |
| 9. Cameron House seaplane jetty | 31. Ben Venue |
| 10. Langbank | 32. Tarbet |
| 11. Inchcailloch | 33. Ben Ledi |
| 12. Endrick Viewpoint | |
| 13. Finlaystone Estate | |
| 14. WHW Near Drymen | |
| 15. Ben Bowie | |
| 16. Dumgoyne Hill | |
| 17. Balmaha Harbour | |
| 18. Port Glasgow | |
| 19. Conic Hill | |
| 20. Waterbus | |
| 21. Bat a Charchel | |
| 22. Balfron Cemetery | |

Coordinate System: British National Grid
 Projection: Transverse Mercator
 Datum: OSGB 1936
 Units: Meter



Rev	Date	Description	Drn	Chk	App
01	30/05/2023	First Draft	NL	AW	JW

Vale of Leven Wind Farm

TITLE: Figure 5.8c:
 Hub Height ZTV with Viewpoints
 (45km Radius)

0 6.5 13

Kilometres

SCALE: 1:165,000 @ A1

N
E
S
W

REV 01

Hub:	164m	Observer height:	2m
DTM:	OS T5/ T50	Surface features:	Excluded
DTM resolution:	10m		Included