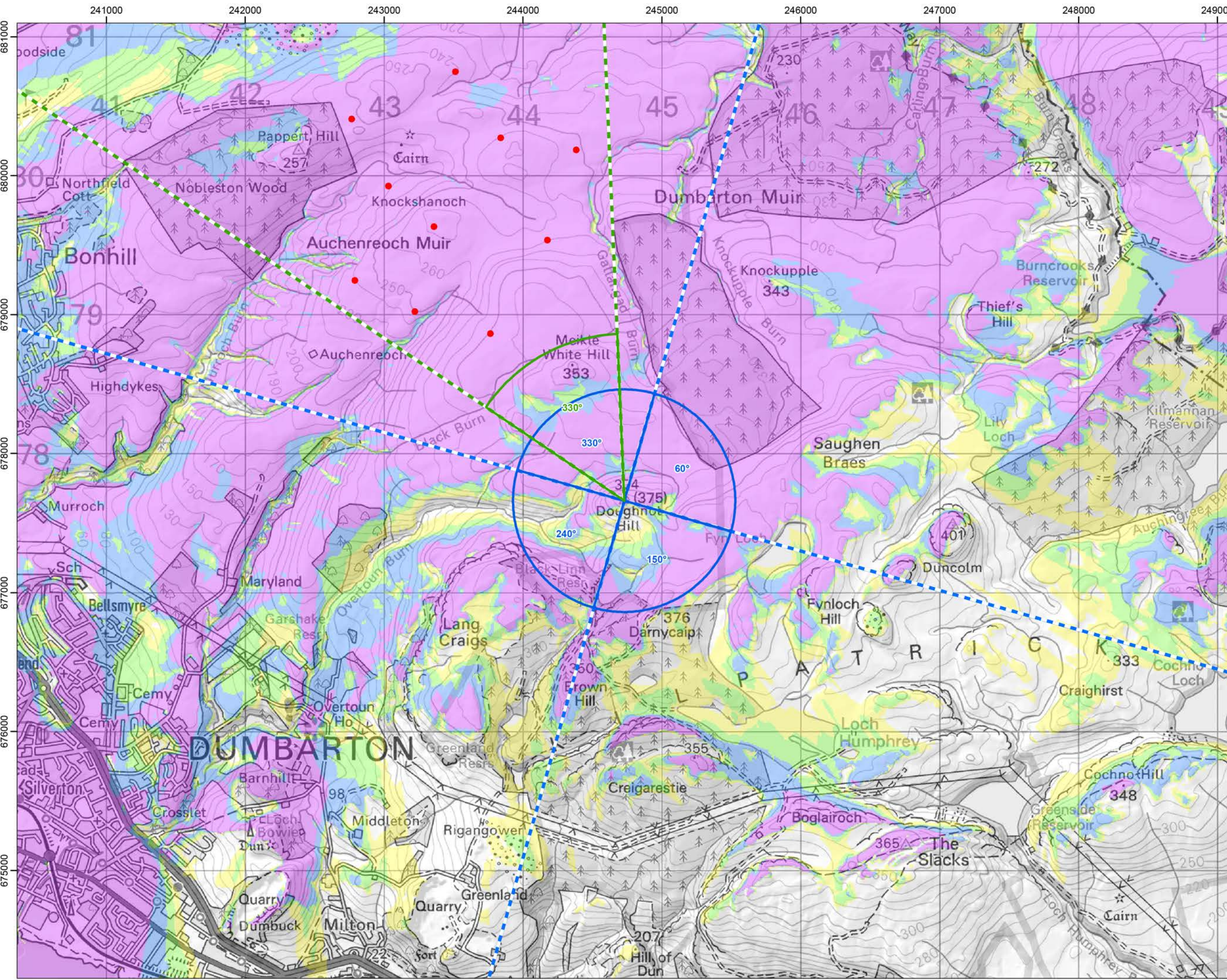


Cumulative Wind Farms and Location Plan 1:470,000 Scale



Viewpoint Location Plan with Horizontal Field of View 1:25,000 Scale

**Legend:**

- Proposed Turbines
- 10km Radii
- 45km Radii
- Viewpoint

**Cumulative Wind Farm Status**

- Operational
- Under Construction
- Consented
- Appeal/Application

**Photomontage and Wireline (53.5°HFOV)**

- Panorama with Wireline (90°HFOV)

**No. of Blade Tips Theoretically Visible**

- 1 - 3
- 4 - 6
- 7 - 9
- 10

Tip Height: 250m  
Observer Height: 2m  
DTM: OS 1:50,000 DTM  
Surface Features: Excluded  
DTM Resolution: 10m  
Earth Curvature: Included

Coordinate System: British National Grid  
Projection: Transverse Mercator  
Datum: OSGB 1936  
Units: Meter

Rev	Date	Description	Drm	Chk	App
01	19/07/2023	First Draft	NL	AW	JW

**Vale of Leven Wind Farm**

**RSK** Coriolis Energy

TITLE: Figure 5.16a Viewpoint Plan  
Viewpoint 1:  
Doughton Hill

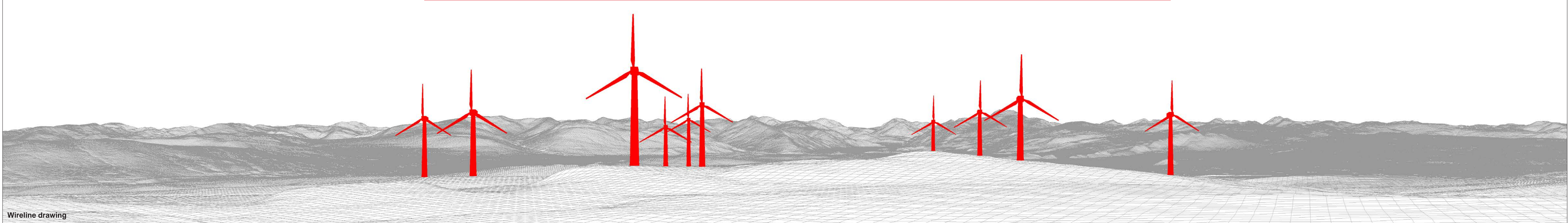
ID: P663510\_TAG000\_Layout\_A3\_L

0 20 40  
Kilometres  
SCALE: 1:350,000 @ A3

REV 00

© OpenStreetMap (and) contributors, CC-BY-SA © Crown copyright and database rights (2023) Ordnance Survey 0100031673. Contains OS data © Crown copyright and database right (2023). Contains public sector information licensed under the Open Government Licence v3.0.

Document Path: P:\2023\1211689\_ValeOfLevenGIS\211689\_ValeOfLevenGIS\211689\_VOL\_LVA\_VP\_Plan.mxd



OS reference: 244728 E 677661 N	Horizontal field of view: 90° (cylindrical projection)	Camera: Canon EOS 6D MKII
Eye level: 374.5 mAOD	Principal distance: 522 mm	Lens: Canon EF 50mm f/1.4
Direction of view: 330°	Paper size: 841 x 297 mm (half A1)	Camera height: 1.5 m
Nearest turbine: 1.54 km	Correct printed image size: 820 x 130 mm	Date and time: 01.09.2022 14:38

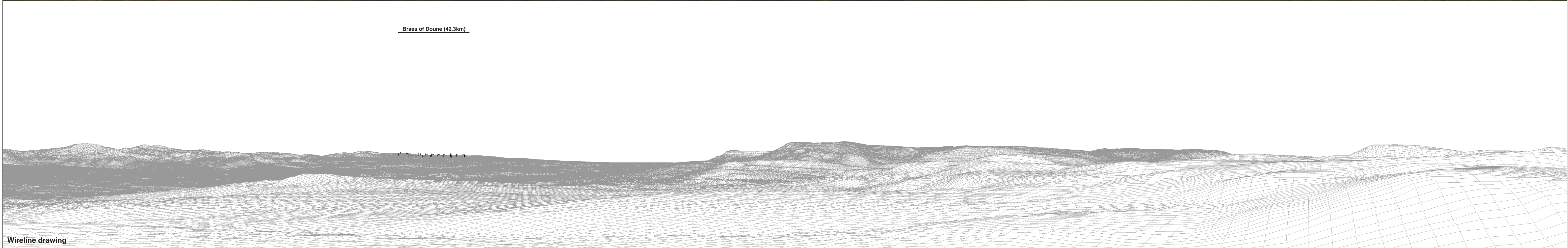
**Figure: 5.16b**  
Viewpoint 1: Doughnot Hill  
Vale of Leven Wind Farm  
© Crown copyright. All rights reserved (2023). Licence number 0100031673



Baseline photograph

This image provides landscape and visual context only

Braes of Doune (42.3km)



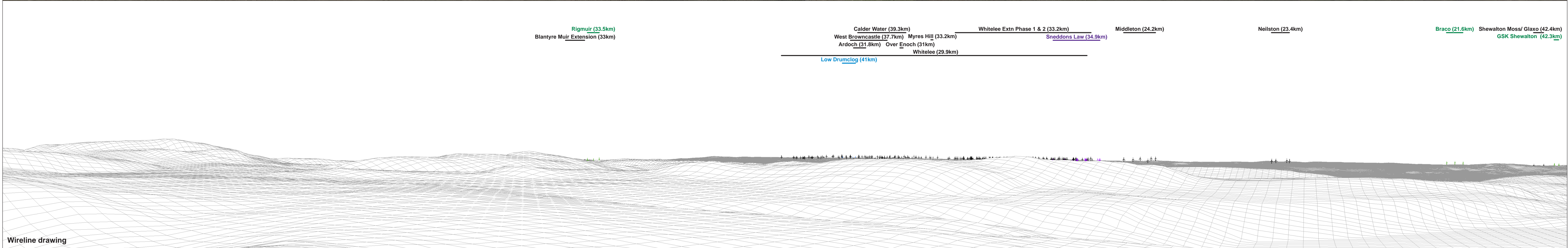
Wireline drawing

<b>OS reference:</b> 244728 E 677661 N	<b>Horizontal field of view:</b> 90° (cylindrical projection)	<b>Camera:</b> Canon EOS 6D MKII
<b>Eye level:</b> 374.5 mAOD	<b>Principal distance:</b> 522 mm	<b>Lens:</b> Canon EF 50mm f/1.4
<b>Direction of view:</b> 60°	<b>Paper size:</b> 841 x 297 mm (half A1)	<b>Camera height:</b> 1.5 m
<b>Nearest turbine:</b> 1.54 km	<b>Correct printed image size:</b> 820 x 130 mm	<b>Date and time:</b> 01.09.2022 14:38



Baseline photograph

This image provides landscape and visual context only



Wireline drawing

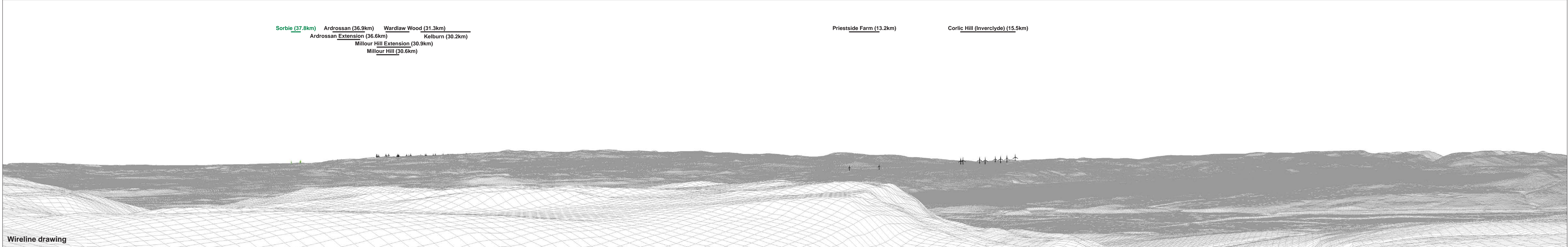
OS reference: 244728 E 677661 N	Horizontal field of view: 90° (cylindrical projection)	Camera: Canon EOS 6D MKII
Eye level: 374.5 mAOD	Principal distance: 522 mm	Lens: Canon EF 50mm f/1.4
Direction of view: 150°	Paper size: 841 x 297 mm (half A1)	Camera height: 1.5 m
Nearest turbine: 1.54 km	Correct printed image size: 820 x 130 mm	Date and time: 01.09.2022 14:38

Figure: 5.16d  
Viewpoint 1: Doughnot Hill  
Vale of Leven Wind Farm  
© Crown copyright. All rights reserved (2023). Licence number 0100031673



Baseline photograph

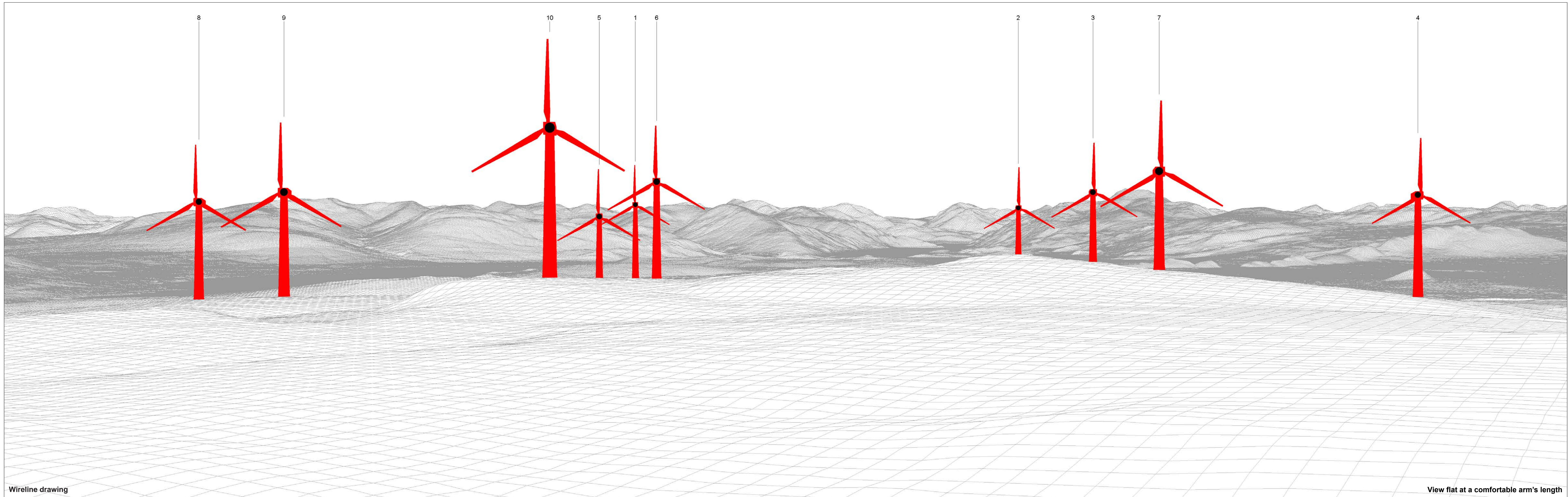
This image provides landscape and visual context only



Wireline drawing

<b>OS reference:</b> 244728 E 677661 N	<b>Horizontal field of view:</b> 90° (cylindrical projection)	<b>Camera:</b> Canon EOS 6D MKII
<b>Eye level:</b> 374.5 mAOD	<b>Principal distance:</b> 522 mm	<b>Lens:</b> Canon EF 50mm f/1.4
<b>Direction of view:</b> 240°	<b>Paper size:</b> 841 x 297 mm (half A1)	<b>Camera height:</b> 1.5 m
<b>Nearest turbine:</b> 1.54 km	<b>Correct printed image size:</b> 820 x 130 mm	<b>Date and time:</b> 01.09.2022 14:38

**Figure: 5.16e**  
Viewpoint 1: Doughnot Hill  
Vale of Leven Wind Farm  
© Crown copyright. All rights reserved (2023). Licence number 0100031673



Wireline drawing

View flat at a comfortable arm's length

OS reference: 244728 E 677661 N  
 Eye level: 374.5 mAOD  
 Direction of view: 330°  
 Nearest turbine: 1.54 km

Horizontal field of view: 53.5° (planar projection)  
 Principal distance: 812.5 mm  
 Paper size: 841 x 297 mm (half A1)  
 Correct printed image size: 820 x 260 mm

Camera: Canon EOS 6D MKII  
 Lens: Canon EF 50mm f/1.4  
 Camera height: 1.5 m  
 Date and time: 01.09.2022 14:38

● Turbine with nacelle lighting (All)

Figure: 5.16f  
 Viewpoint 1: Doughnot Hill  
 Vale of Leven Wind Farm  
© Crown copyright. All rights reserved (2023). Licence number 0100031673



Photomontage: Proposed Development

View flat at a comfortable arm's length

<b>OS reference:</b> 244728 E 677661 N	<b>Horizontal field of view:</b> 53.5° (planar projection)	<b>Camera:</b> Canon EOS 6D MKII	<b>Figure: 5.16g</b> <b>Viewpoint 1: Doughnot Hill</b> <b>Vale of Leven Wind Farm</b> <small>© Crown copyright. All rights reserved (2023). Licence number 0100031673</small>
<b>Eye level:</b> 374.5 mAOD	<b>Principal distance:</b> 812.5 mm	<b>Lens:</b> Canon EF 50mm f/1.4	
<b>Direction of view:</b> 330°	<b>Paper size:</b> 841 x 297 mm (half A1)	<b>Camera height:</b> 1.5 m	
<b>Nearest turbine:</b> 1.54 km	<b>Correct printed image size:</b> 820 x 260 mm	<b>Date and time:</b> 01.09.2022 14:38	