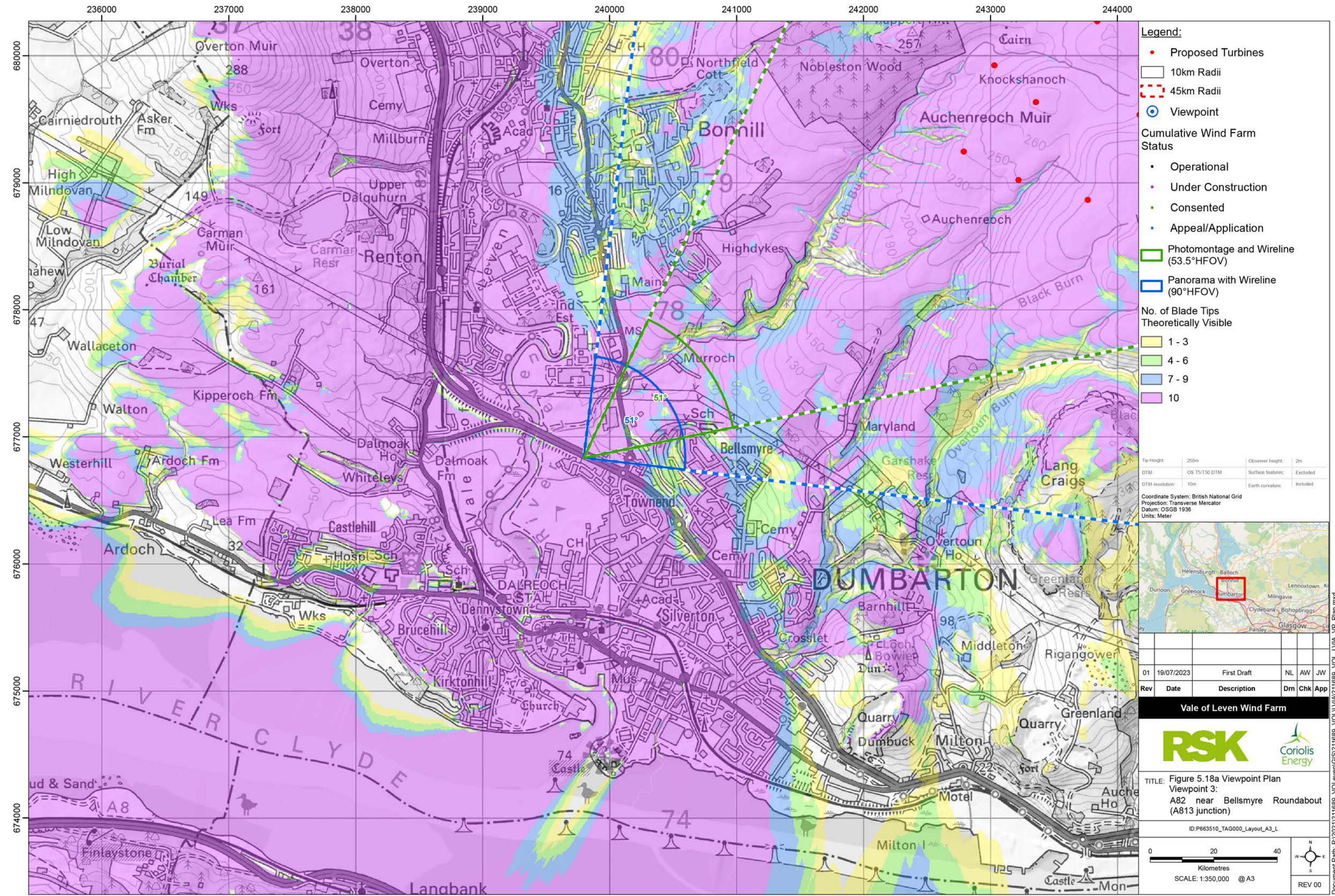


© OpenStreetMap (and) contributors, CC-BY-SA © Crown copyright and database rights (2023) Ordnance Survey 0100031673. Contains OS data © Crown copyright and database right (2023). Contains public sector information licensed under the Open Government Licence v3.0.

Cumulative Wind Farms and Location Plan 1:470,000 Scale



Legend:

- Proposed Turbines
- 10km Radii
- 45km Radii
- Viewpoint

Cumulative Wind Farm Status

- Operational
- Under Construction
- Consented
- Appeal/Application

Photomontage and Wireline (53.5°HFOV)

Panorama with Wireline (90°HFOV)

No. of Blade Tips Theoretically Visible

- 1 - 3
- 4 - 6
- 7 - 9
- 10

Tip Height: 250m
Observer Height: 2m
DTM: OS 1:50,000 DTM
Surface Features: Excluded
DTM Resolution: 10m
Earth Curvature: Included

Coordinate System: British National Grid
Projection: Transverse Mercator
Datum: OSGB 1936
Units: Meter

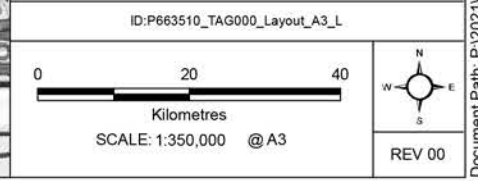


Rev	Date	Description	Drn	Chk	App
01	19/07/2023	First Draft	NL	AW	JW

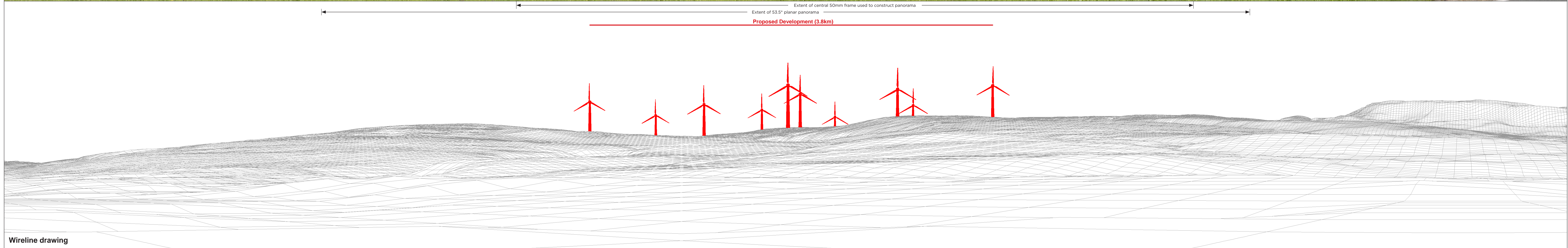
Vale of Leven Wind Farm



TITLE: Figure 5.18a Viewpoint Plan
Viewpoint 3:
A82 near Bellsmyre Roundabout
(A813 junction)



Document Path: P:\2023\12\11689_ValeOfLeven\GIS\2\1689_ValeOfLeven\GIS\2\1689_VOL_LVA_LP_Plan.mxd

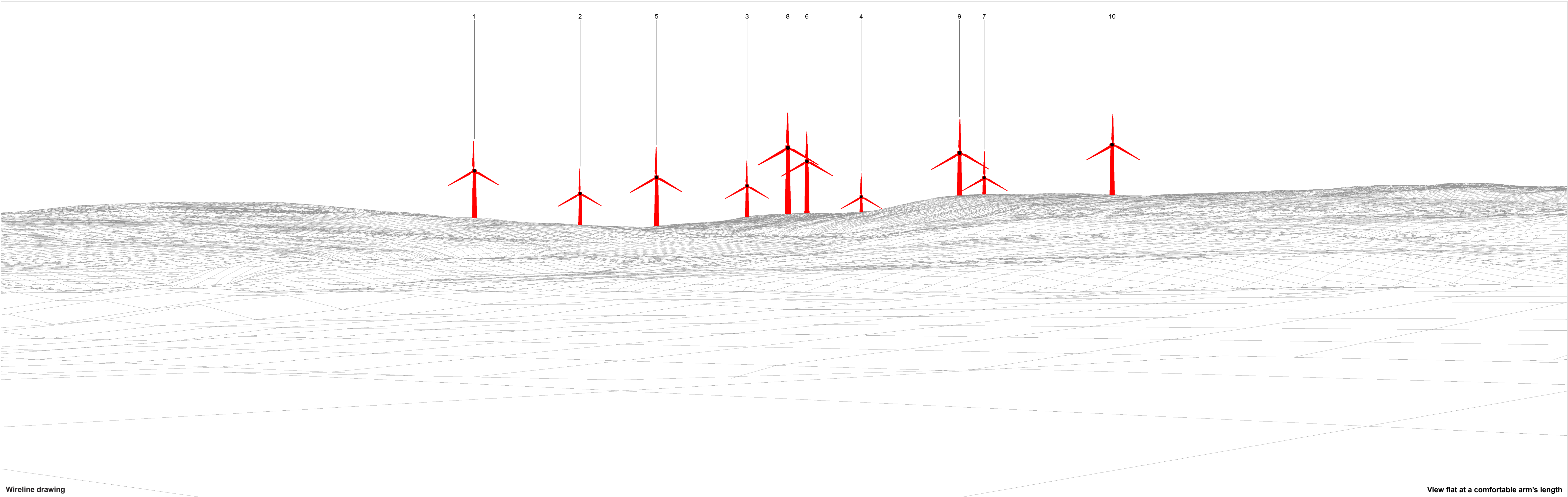


OS reference: 239795 E 676835 N
 Eye level: 8.1 mAOD
 Direction of view: 51°
 Nearest turbine: 3.84 km

Horizontal field of view: 90° (cylindrical projection)
 Principal distance: 522 mm
 Paper size: 841 x 297 mm (half A1)
 Correct printed image size: 820 x 130 mm

Camera: Canon EOS 6D MKII
 Lens: Canon EF 50mm f/1.4
 Camera height: 1.5 m
 Date and time: 27.07.2022 13:25

Figure: 5.18b
 Viewpoint 3: A82 near Bellsmyre Roundabout (A813 junction)
 Vale of Leven Wind Farm



Wireline drawing

View flat at a comfortable arm's length

<p>OS reference: 239795 E 676835 N Eye level: 8.1 mAOD Direction of view: 51° Nearest turbine: 3.84 km</p>	<p>Horizontal field of view: 53.5° (planar projection) Principal distance: 812.5 mm Paper size: 841 x 297 mm (half A1) Correct printed image size: 820 x 260 mm</p>	<p>Camera: Canon EOS 6D MKII Lens: Canon EF 50mm f/1.4 Camera height: 1.5 m Date and time: 27.07.2022 13:25</p>	<p>● Turbine with nacelle lighting (All)</p>	<p>Figure: 5.18c Viewpoint 3: A82 near Bellsmyre Roundabout (A813 junction) Vale of Leven Wind Farm <small>© Crown copyright. All rights reserved (2023). Licence number 0100031673</small></p>
---	--	--	--	---



Photomontage: Proposed Development

View flat at a comfortable arm's length

OS reference: 239795 E 676835 N	Horizontal field of view: 53.5° (planar projection)	Camera: Canon EOS 6D MKII	Figure: 5.18d Viewpoint 3: A82 near Bellsmyre Roundabout (A813 junction) Vale of Leven Wind Farm <small>© Crown copyright. All rights reserved (2023). Licence number 0100031673</small>
Eye level: 8.1 mAOD	Principal distance: 812.5 mm	Lens: Canon EF 50mm f/1.4	
Direction of view: 51°	Paper size: 841 x 297 mm (half A1)	Camera height: 1.5 m	
Nearest turbine: 3.84 km	Correct printed image size: 820 x 260 mm	Date and time: 27.07.2022 13:25	