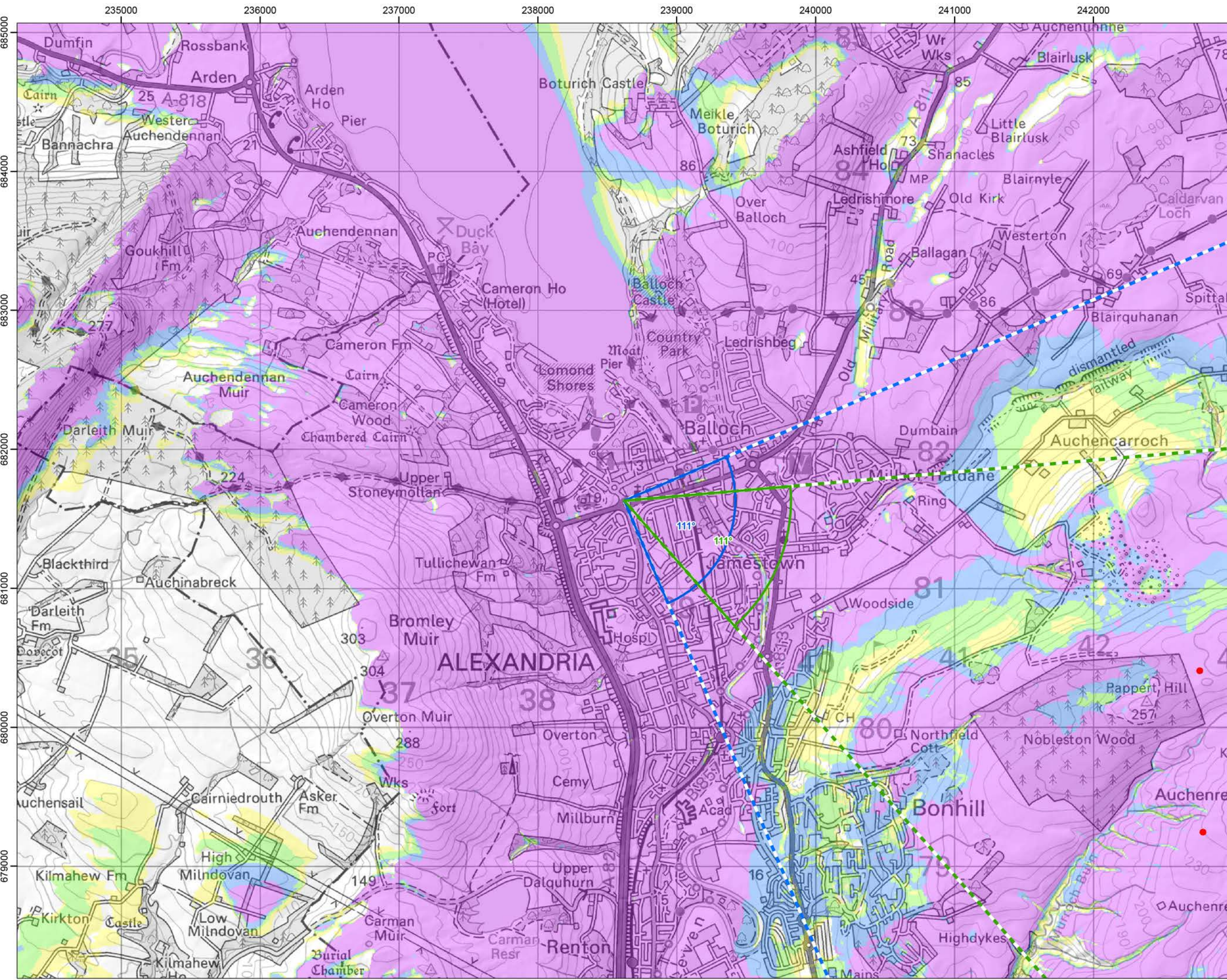


Cumulative Wind Farms and Location Plan 1:470,000 Scale



Viewpoint Location Plan with Horizontal Field of View 1:25,000 Scale

**Legend:**

- Proposed Turbines
- 10km Radii
- 45km Radii
- Viewpoint

**Cumulative Wind Farm Status**

- Operational
- Under Construction
- Consented
- Appeal/Application

**Photomontage and Wireline (53.5°HFOV)**

- Panorama with Wireline (90°HFOV)

**No. of Blade Tips Theoretically Visible**

- 1 - 3
- 4 - 6
- 7 - 9
- 10

Tip Height: 250m  
 Observer Height: 2m  
 DTM: OS T5/150 DTM  
 Surface Features: Excluded  
 DTM Resolution: 10m  
 Earth Curvature: Included

Coordinate System: British National Grid  
 Projection: Transverse Mercator  
 Datum: OSGB 1936  
 Units: Meter

Rev	Date	Description	Dn	Chk	App
01	19/07/2023	First Draft	NL	AW	JW

**Vale of Leven Wind Farm**

**RSK** **Coriolis Energy**

TITLE: Figure 5.20a Viewpoint Plan  
Viewpoint 5:  
A811 near Balloch

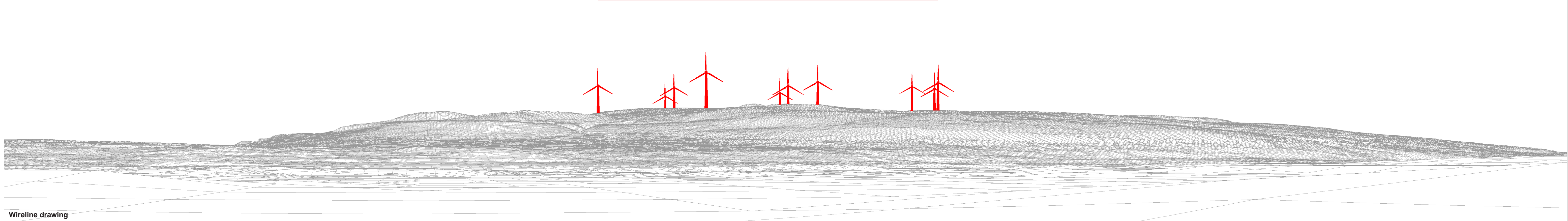
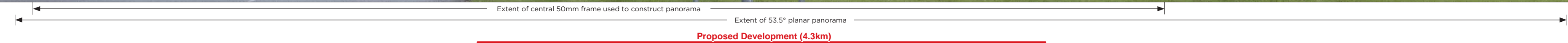
ID: P663510\_TAG000\_Layout\_A3\_L

0 20 40  
Kilometres  
SCALE: 1:350,000 @ A3

REV 00

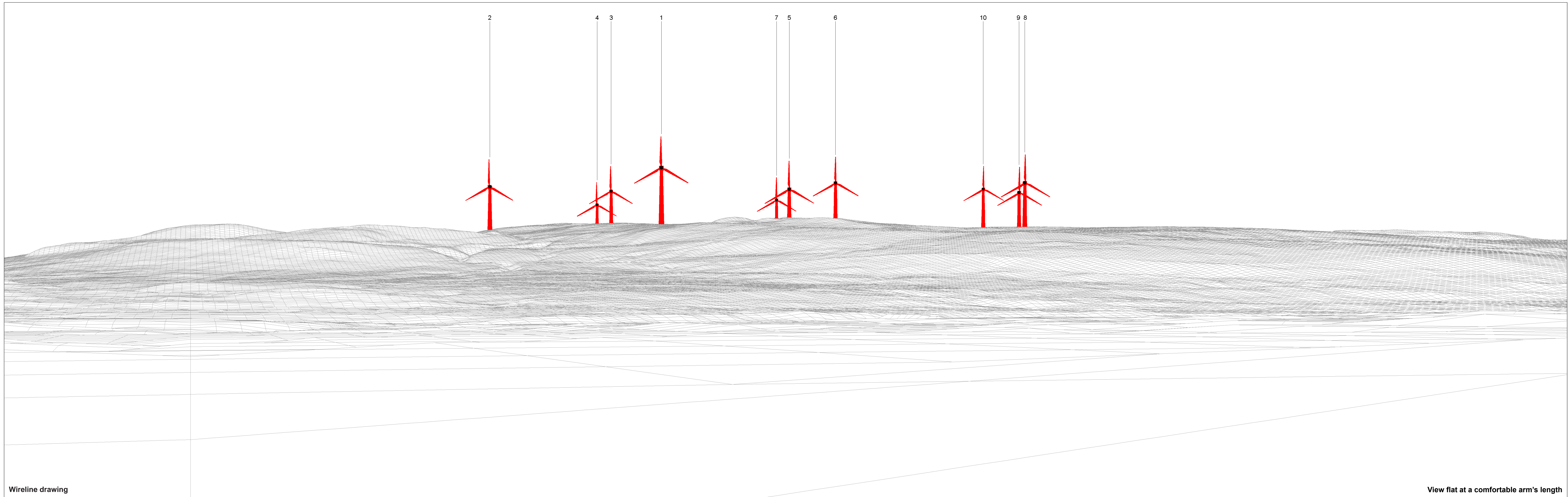
© OpenStreetMap (and) contributors, CC-BY-SA © Crown copyright and database rights (2023) Ordnance Survey 0100031673. Contains OS data © Crown copyright and database right (2023). Contains public sector information licensed under the Open Government Licence v3.0.

Document Path: P:\2021\1211689\_ValeofLevenGIS\211689\_VOL\1\VA0211689\_VOL\_LVA\_VP\_Plan.mxd



OS reference: 238621 E 681630 N	Horizontal field of view: 90° (cylindrical projection)	Camera: Canon EOS 6D MKII
Eye level: 19.5 mAOD	Principal distance: 522 mm	Lens: Canon EF 50mm f/1.4
Direction of view: 111°	Paper size: 841 x 297 mm (half A1)	Camera height: 1.5 m
Nearest turbine: 4.32 km	Correct printed image size: 820 x 130 mm	Date and time: 27.07.2022 13:51

**Figure: 5.20b**  
Viewpoint 5: A811 Near Balloch  
Vale of Leven Wind Farm  
© Crown copyright. All rights reserved (2023). Licence number 0100031673



Wireline drawing

View flat at a comfortable arm's length

OS reference: 238621 E 681630 N  
Eye level: 19.5 mAOD  
Direction of view: 111°  
Nearest turbine: 4.32 km

Horizontal field of view: 53.5° (planar projection)  
Principal distance: 812.5 mm  
Paper size: 841 x 297 mm (half A1)  
Correct printed image size: 820 x 260 mm

Camera: Canon EOS 6D MKII  
Lens: Canon EF 50mm f/1.4  
Camera height: 1.5 m  
Date and time: 27.07.2022 13:51

● Turbine with nacelle lighting (All)

Figure: 5.20c  
Viewpoint 5: A811 Near Balloch  
Vale of Leven Wind Farm  
© Crown copyright. All rights reserved (2023). Licence number 0100031673



Photomontage: Proposed Development

View flat at a comfortable arm's length

OS reference: 238621 E 681630 N  
 Eye level: 19.5 mAOD  
 Direction of view: 111°  
 Nearest turbine: 4.32 km

Horizontal field of view: 53.5° (planar projection)  
 Principal distance: 812.5 mm  
 Paper size: 841 x 297 mm (half A1)  
 Correct printed image size: 820 x 260 mm

Camera: Canon EOS 6D MKII  
 Lens: Canon EF 50mm f/1.4  
 Camera height: 1.5 m  
 Date and time: 27.07.2022 13:51

Figure: 5.20d  
 Viewpoint 5: A811 Near Balloch  
 Vale of Leven Wind Farm  
© Crown copyright. All rights reserved (2023). Licence number 0100031673