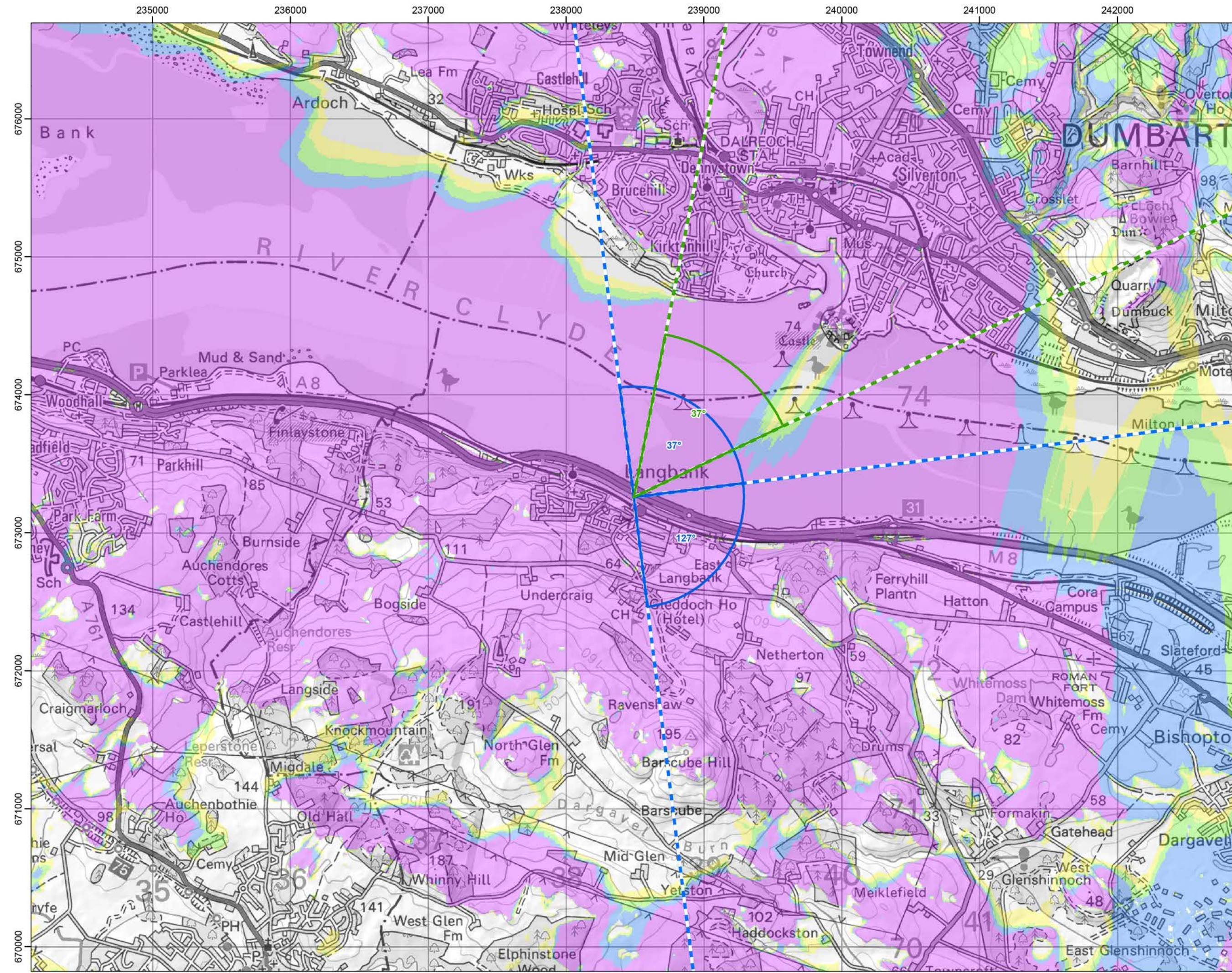


Cumulative Wind Farms and Location Plan 1:470,000 Scale



Viewpoint Location Plan with Horizontal Field of View 1:25,000 Scale

Legend:

- Proposed Turbines
- 10km Radii
- 45km Radii
- Viewpoint

Cumulative Wind Farm Status

- Operational
- Under Construction
- Consented
- Appeal/Application

No. of Blade Tips Theoretically Visible

- 1 - 3
- 4 - 6
- 7 - 9
- 10

Photomontage and Wireline (53.5°HFOV)

Panorama with Wireline (90°HFOV)

Technical Details:

Tip Height: 250m
 Observer Height: 2m
 DTM: OS T5/150 DTM
 Surface Features: Excluded
 DTM Resolution: 10m
 Earth Curvature: Included

Coordinate System: British National Grid
 Projection: Transverse Mercator
 Datum: OSGB 1936
 Units: Meter

Rev	Date	Description	Drn	Chk	App
01	19/07/2023	First Draft	NL	AW	JW

Vale of Leven Wind Farm

RSK **Coriolis Energy**

TITLE: Figure 5.25a Viewpoint Plan
 Viewpoint 10:
 Langbank

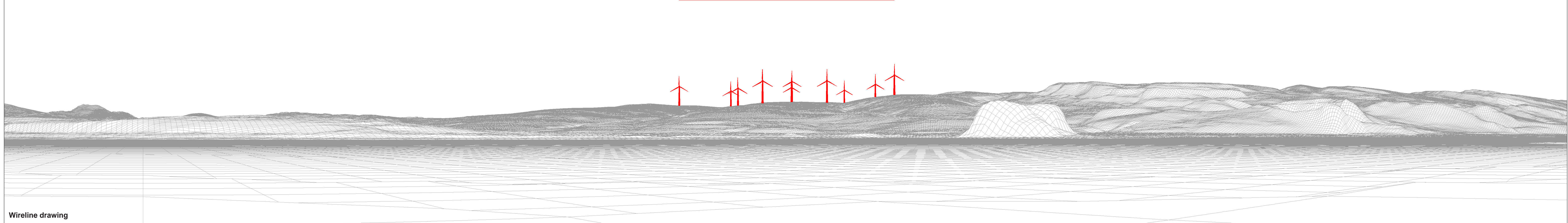
ID: P663510_TAG000_Layout_A3_L

0 20 40
 Kilometres
 SCALE: 1:350,000 @ A3

REV 00

© OpenStreetMap (and) contributors, CC-BY-SA © Crown copyright and database rights (2023) Ordnance Survey 0100031673. Contains OS data © Crown copyright and database right (2023). Contains public sector information licensed under the Open Government Licence v3.0.

Document Path: P:\2023\12\11689_ValeOfLevenGIS\211689_ValeOfLevenGIS\211689_VOL_LVA_LP_Plan.mxd



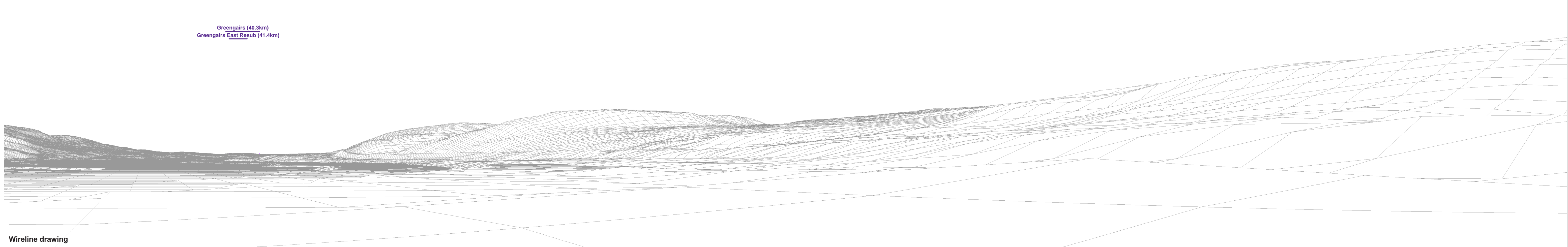
OS reference: 238490 E 673258 N
 Eye level: 7.0 mAOD
 Direction of view: 37°
 Nearest turbine: 7.37 km

Horizontal field of view: 90° (cylindrical projection)
 Principal distance: 522 mm
 Paper size: 841 x 297 mm (half A1)
 Correct printed image size: 820 x 130 mm

Camera: Canon EOS 5D MKII
 Lens: Canon EF 50mm f/1.4
 Camera height: 1.5 m
 Date and time: 23.06.2022 13:54



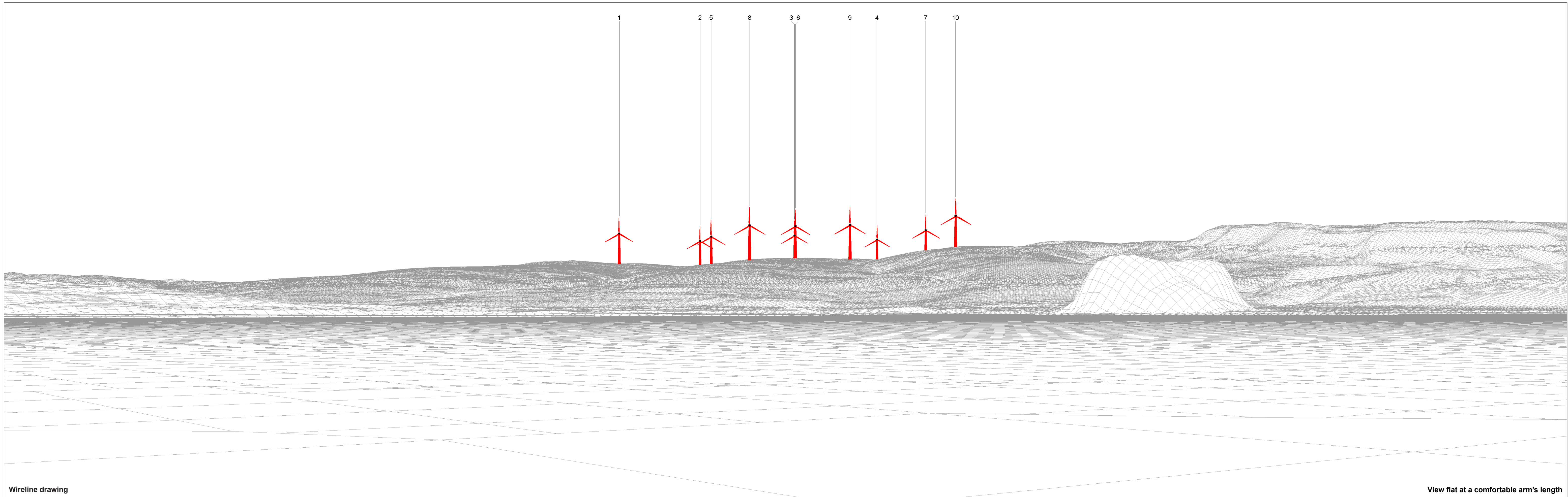
Greengairs (40.3km)
 Greengairs East Resub (41.4km)



OS reference: 238490 E 673258 N
 Eye level: 7.0 mAOD
 Direction of view: 127°
 Nearest turbine: 7.37 km

Horizontal field of view: 90° (cylindrical projection)
 Principal distance: 522 mm
 Paper size: 841 x 297 mm (half A1)
 Correct printed image size: 820 x 130 mm

Camera: Canon EOS 5D MKII
 Lens: Canon EF 50mm f/1.4
 Camera height: 1.5 m
 Date and time: 23.06.2022 13:54



Wireline drawing

View flat at a comfortable arm's length

OS reference: 238490 E 673258 N
 Eye level: 7.0 mAOD
 Direction of view: 37°
 Nearest turbine: 7.37 km

Horizontal field of view: 53.5° (planar projection)
 Principal distance: 812.5 mm
 Paper size: 841 x 297 mm (half A1)
 Correct printed image size: 820 x 260 mm

Camera: Canon EOS 5D MKII
 Lens: Canon EF 50mm f/1.4
 Camera height: 1.5 m
 Date and time: 23.06.2022 13:54

● Turbine with nacelle lighting (All)

Figure: 5.25d
 Viewpoint 10: Langbank
 Vale of Leven Wind Farm
© Crown copyright. All rights reserved (2023). Licence number 0100031673



Photomontage: Proposed Development

View flat at a comfortable arm's length

OS reference: 238490 E 673258 N
Eye level: 7.0 mAOD
Direction of view: 37°
Nearest turbine: 7.37 km

Horizontal field of view: 53.5° (planar projection)
Principal distance: 812.5 mm
Paper size: 841 x 297 mm (half A1)
Correct printed image size: 820 x 260 mm

Camera: Canon EOS 5D MKII
Lens: Canon EF 50mm f/1.4
Camera height: 1.5 m
Date and time: 23.06.2022 13:54

Figure: 5.25e
Viewpoint 10: Langbank
Vale of Leven Wind Farm
© Crown copyright. All rights reserved (2023). Licence number 0100031673