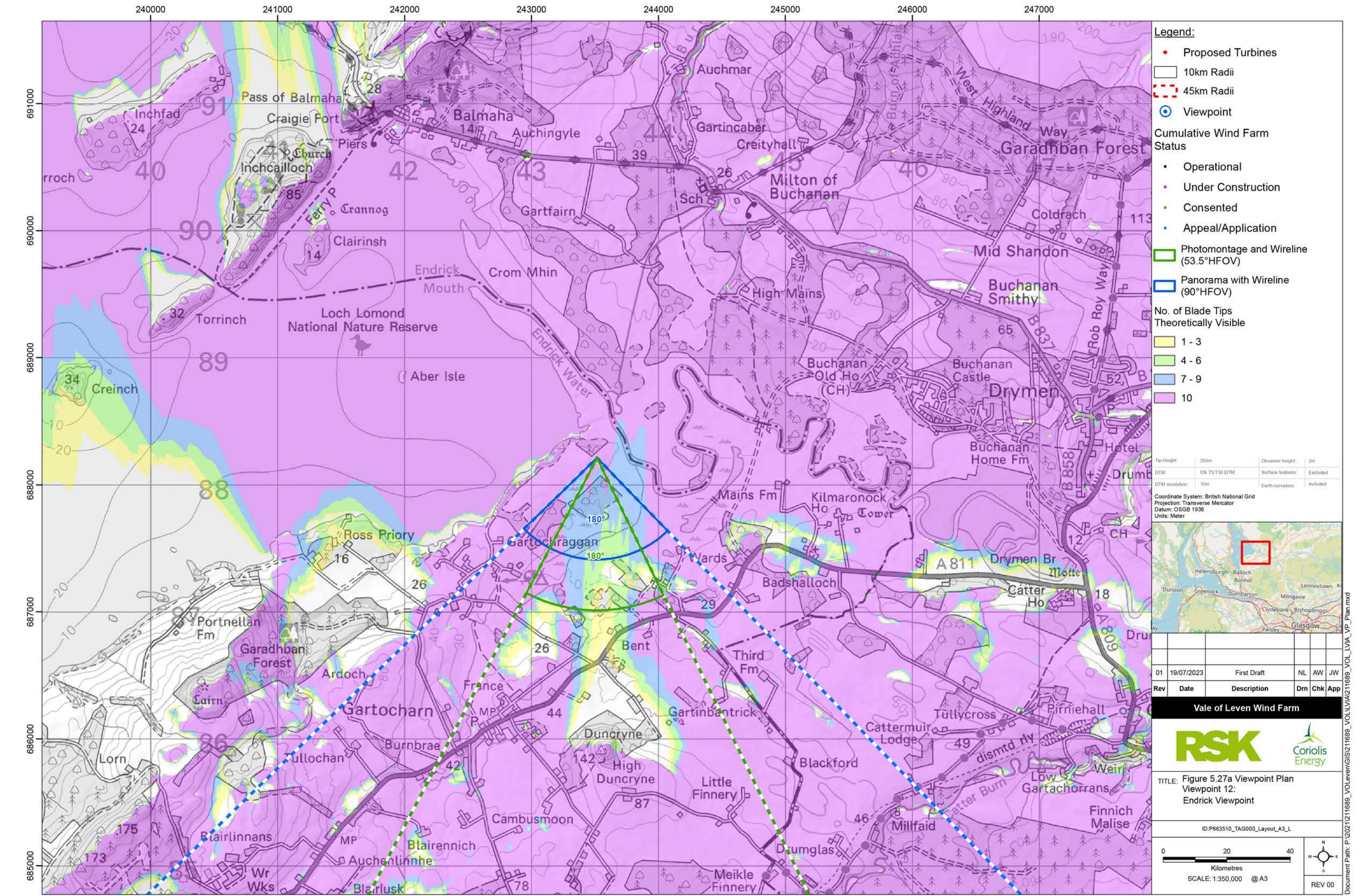
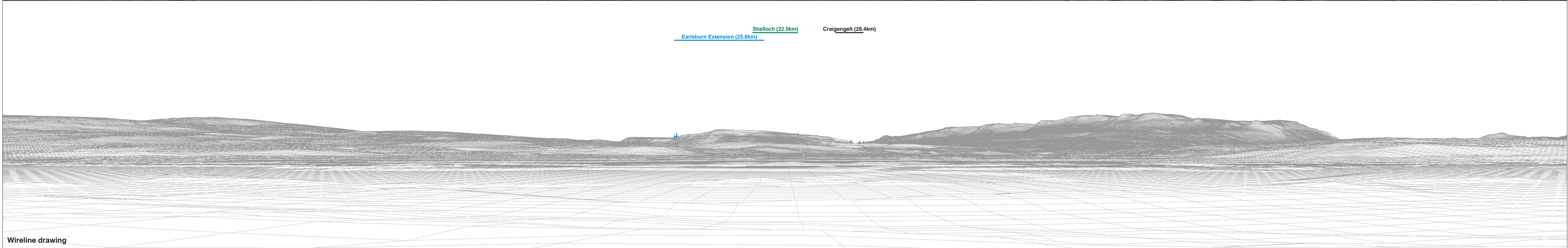


© OpenStreetMap (and) contributors, CC-BY-SA © Crown copyright and database rights (2023) Ordnance Survey 0100031673. Contains OS data © Crown copyright and database right (2023). Contains public sector information licensed under the Open Government Licence v3.0.

Cumulative Wind Farms and Location Plan 1:470,000 Scale

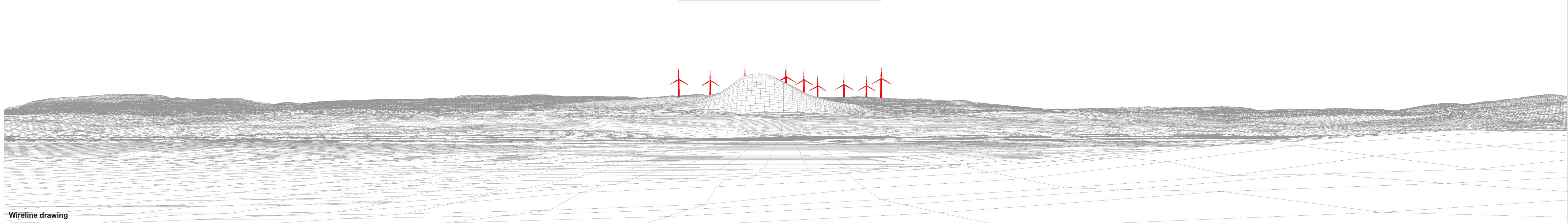
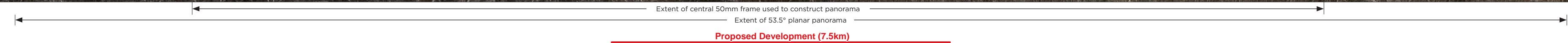


Viewpoint Location Plan with Horizontal Field of View 1:25,000 Scale



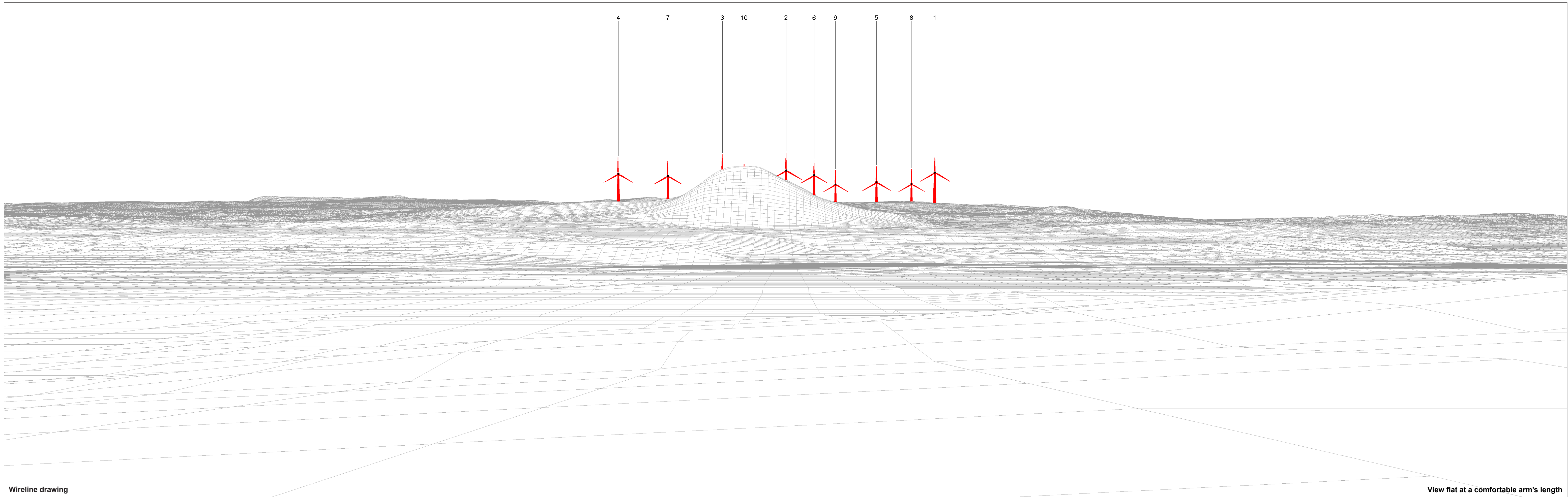
OS reference: 243515 E 688212 N	Horizontal field of view: 90° (cylindrical projection)	Camera: Canon EOS 6D MKI
Eye level: 18.3 mAOD	Principal distance: 522 mm	Lens: Canon EF 50mm f/1.4
Direction of view: 90°	Paper size: 841 x 297 mm (half A1)	Camera height: 1.5 m
Nearest turbine: 7.46 km	Correct printed image size: 820 x 130 mm	Date and time: 20.04.2023 11:10

Figure: 5.27b
Viewpoint 12: Endrick Viewpoint
Vale of Leven Wind Farm
© Crown copyright. All rights reserved (2023). Licence number 0100031673



OS reference: 243515 E 688212 N	Horizontal field of view: 90° (cylindrical projection)	Camera: Canon EOS 6D MKI
Eye level: 18.3 mAOD	Principal distance: 522 mm	Lens: Canon EF 50mm f/1.4
Direction of view: 180°	Paper size: 841 x 297 mm (half A1)	Camera height: 1.5 m
Nearest turbine: 7.46 km	Correct printed image size: 820 x 130 mm	Date and time: 20.04.2023 11:10

Figure: 5.27c
Viewpoint 12: Endrick Viewpoint
Vale of Leven Wind Farm
© Crown copyright. All rights reserved (2023). Licence number 0100031673



Wireline drawing

View flat at a comfortable arm's length

OS reference: 243515 E 688212 N
 Eye level: 18.3 mAOD
 Direction of view: 180°
 Nearest turbine: 7.46 km

Horizontal field of view: 53.5° (planar projection)
 Principal distance: 812.5 mm
 Paper size: 841 x 297 mm (half A1)
 Correct printed image size: 820 x 260 mm

Camera: Canon EOS 6D MKI
 Lens: Canon EF 50mm f/1.4
 Camera height: 1.5 m
 Date and time: 20.04.2023 11:10

● Turbine with nacelle lighting (All)

Figure: 5.27d
 Viewpoint 12: Endrick Viewpoint
 Vale of Leven Wind Farm
© Crown copyright. All rights reserved (2023). Licence number 0100031673



Photomontage: Proposed Development

View flat at a comfortable arm's length

OS reference: 243515 E 688212 N	Horizontal field of view: 53.5° (planar projection)	Camera: Canon EOS 6D MKI
Eye level: 18.3 mAOD	Principal distance: 812.5 mm	Lens: Canon EF 50mm f/1.4
Direction of view: 180°	Paper size: 841 x 297 mm (half A1)	Camera height: 1.5 m
Nearest turbine: 7.46 km	Correct printed image size: 820 x 260 mm	Date and time: 20.04.2023 11:10

Figure: 5.27e
Viewpoint 12: Endrick Viewpoint
Vale of Leven Wind Farm
© Crown copyright. All rights reserved (2023). Licence number 0100031673