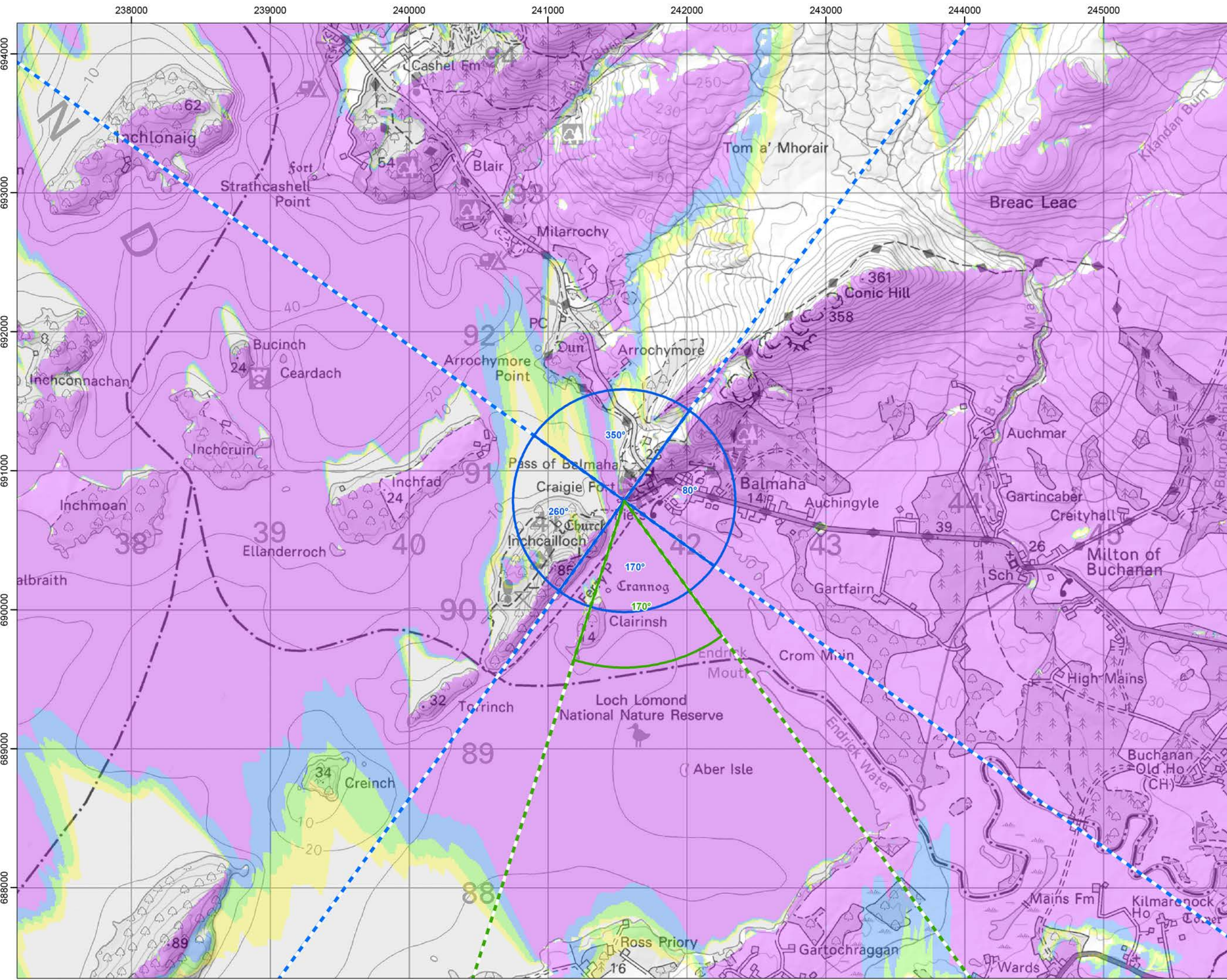


Cumulative Wind Farms and Location Plan 1:470,000 Scale



Viewpoint Location Plan with Horizontal Field of View 1:25,000 Scale

**Legend:**

- Proposed Turbines
- 10km Radii
- 45km Radii
- Viewpoint

**Cumulative Wind Farm Status**

- Operational
- Under Construction
- Consented
- Appeal/Application

**Photomontage and Wireline (53.5°HFOV)**

**Panorama with Wireline (90°HFOV)**

**No. of Blade Tips Theoretically Visible**

- 1 - 3
- 4 - 6
- 7 - 9
- 10

Tip Height: 250m  
Observer Height: 2m  
DTM: OS T5/150 DTM  
Surface Features: Excluded  
DTM Resolution: 10m  
Earth Curvature: Included

Coordinate System: British National Grid  
Projection: Transverse Mercator  
Datum: OSGB 1936  
Units: Meter

Rev	Date	Description	Drn	Chk	App
01	19/07/2023	First Draft	NL	AW	JW

**Vale of Leven Wind Farm**

**RSK** **Coriolis Energy**

TITLE: Figure 5.32a Viewpoint Plan  
Viewpoint 17:  
Balmaha Harbour

ID:P663510\_TAG000\_Layout\_A3\_L

0 20 40  
Kilometres  
SCALE: 1:350,000 @ A3

REV 00

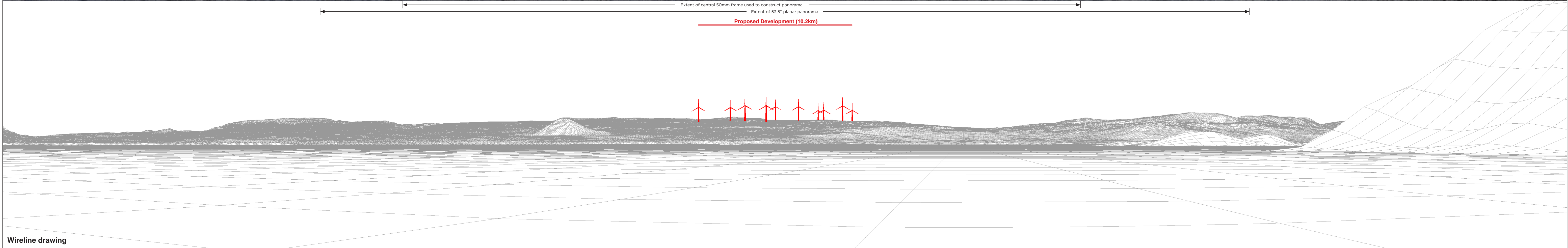
© OpenStreetMap (and) contributors, CC-BY-SA © Crown copyright and database rights (2023) Ordnance Survey 0100031673. Contains OS data © Crown copyright and database right (2023). Contains public sector information licensed under the Open Government Licence v3.0.

Document Path: P:\2023\1211689\_ValeOfLevenGIS\21689\_ValeOfLevenGIS\21689\_VOL\_LVA\_LP\_Plan.mxd



Baseline photograph

This image provides landscape and visual context only



Wireline drawing

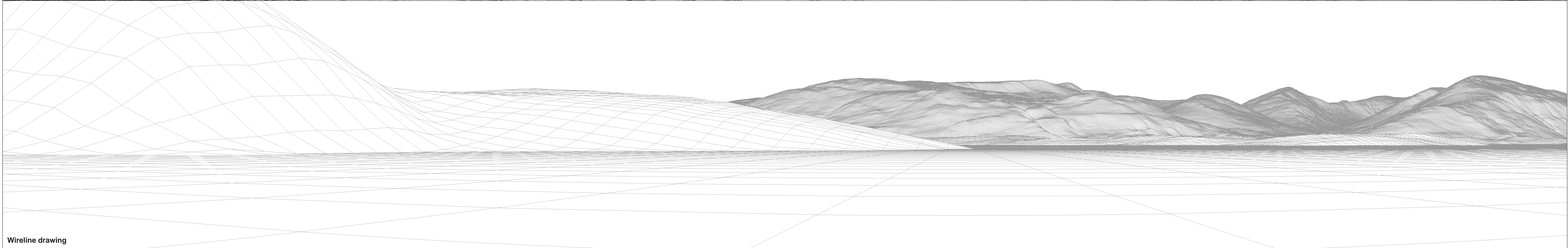
<b>OS reference:</b> 241548 E 690784 N	<b>Horizontal field of view:</b> 90° (cylindrical projection)	<b>Camera:</b> Canon EOS 6D MKII
<b>Eye level:</b> 8.0 mAOD	<b>Principal distance:</b> 522 mm	<b>Lens:</b> Canon EF 50mm f/1.4
<b>Direction of view:</b> 170°	<b>Paper size:</b> 841 x 297 mm (half A1)	<b>Camera height:</b> 1.5 m
<b>Nearest turbine:</b> 10.22 km	<b>Correct printed image size:</b> 820 x 130 mm	<b>Date and time:</b> 29.07.2022 16:51

**Figure: 5.32b**  
**Viewpoint 17: Balmaha Harbour**  
**Vale of Leven Wind Farm**  
© Crown copyright. All rights reserved (2023). Licence number 0100031673



Baseline photograph

This image provides landscape and visual context only



Wireline drawing

OS reference: 241548 E 690784 N  
 Eye level: 8.0 mAOD  
 Direction of view: 260°  
 Nearest turbine: 10.22 km

Horizontal field of view: 90° (cylindrical projection)  
 Principal distance: 522 mm  
 Paper size: 841 x 297 mm (half A1)  
 Correct printed image size: 820 x 130 mm

Camera: Canon EOS 6D MKII  
 Lens: Canon EF 50mm f/1.4  
 Camera height: 1.5 m  
 Date and time: 29.07.2022 16:51

**Figure: 5.32c**  
 Viewpoint 17: Balmaha Harbour  
 Vale of Leven Wind Farm

© Crown copyright. All rights reserved (2023). Licence number 0100031673



Baseline photograph

This image provides landscape and visual context only

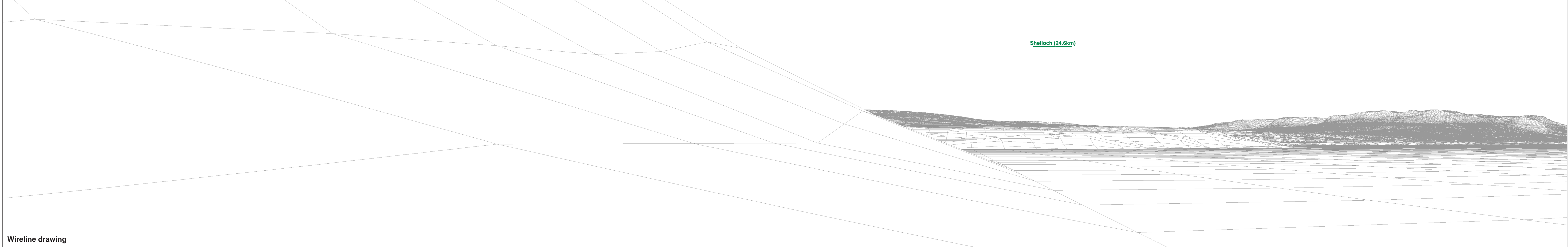


Wireline drawing

<b>OS reference:</b> 241548 E 690784 N	<b>Horizontal field of view:</b> 90° (cylindrical projection)	<b>Camera:</b> Canon EOS 6D MKII
<b>Eye level:</b> 8.0 mAOD	<b>Principal distance:</b> 522 mm	<b>Lens:</b> Canon EF 50mm f/1.4
<b>Direction of view:</b> 350°	<b>Paper size:</b> 841 x 297 mm (half A1)	<b>Camera height:</b> 1.5 m
<b>Nearest turbine:</b> 10.22 km	<b>Correct printed image size:</b> 820 x 130 mm	<b>Date and time:</b> 29.07.2022 16:51

**Figure: 5.32d**  
Viewpoint 17: Balmaha Harbour  
Vale of Leven Wind Farm

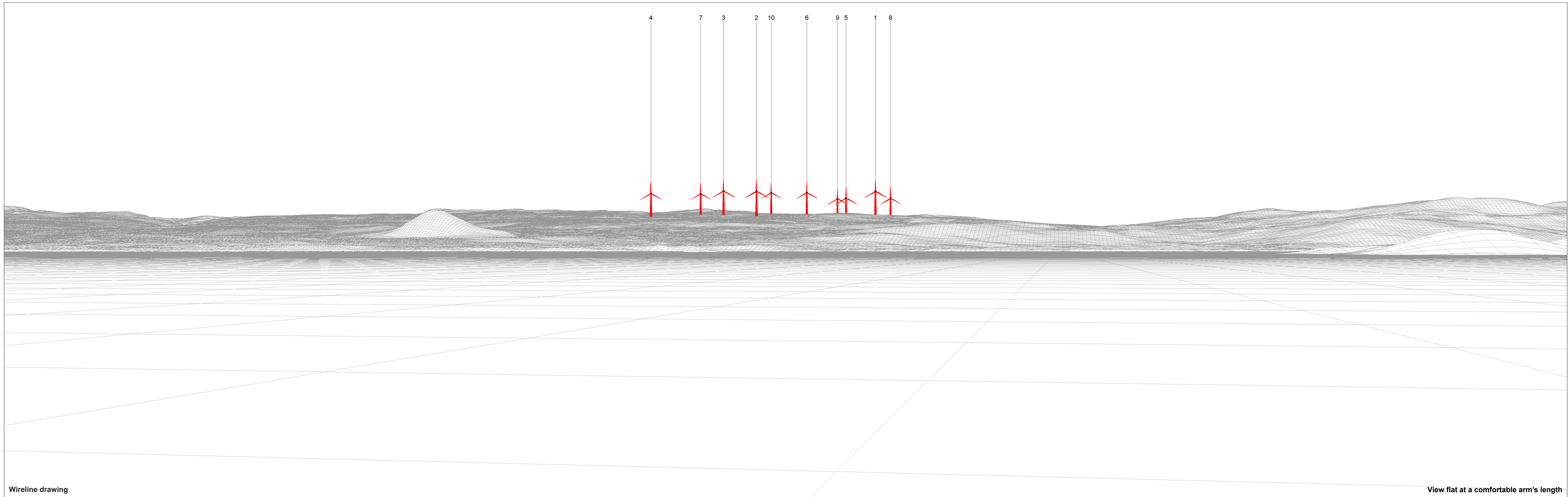
© Crown copyright. All rights reserved (2023). Licence number 0100031673



OS reference: 241548 E 690784 N  
 Eye level: 8.0 mAOD  
 Direction of view: 80°  
 Nearest turbine: 10.22 km

Horizontal field of view: 90° (cylindrical projection)  
 Principal distance: 522 mm  
 Paper size: 841 x 297 mm (half A1)  
 Correct printed image size: 820 x 130 mm

Camera: Canon EOS 6D MKII  
 Lens: Canon EF 50mm f/1.4  
 Camera height: 1.5 m  
 Date and time: 29.07.2022 16:51



4 7 3 2 10 6 9 5 1 8

Wireline drawing

View flat at a comfortable arm's length

OS reference: 241548 E 690784 N  
 Eye level: 8.0 mAOD  
 Direction of view: 170°  
 Nearest turbine: 10.22 km

Horizontal field of view: 53.5° (planar projection)  
 Principal distance: 812.5 mm  
 Paper size: 841 x 297 mm (half A1)  
 Correct printed image size: 820 x 260 mm

Camera: Canon EOS 6D MKII  
 Lens: Canon EF 50mm f/1.4  
 Camera height: 1.5 m  
 Date and time: 29.07.2022 16:51

● Turbine with nacelle lighting (All)

Figure: 5.32f  
 Viewpoint 17: Balmaha Harbour  
 Vale of Leven Wind Farm  
© Crown copyright. All rights reserved (2023). Licence number 0100031673



Photomontage: Proposed Development

View flat at a comfortable arm's length

<b>OS reference:</b> 241548 E 690784 N	<b>Horizontal field of view:</b> 53.5° (planar projection)	<b>Camera:</b> Canon EOS 6D MKII
<b>Eye level:</b> 8.0 mAOD	<b>Principal distance:</b> 812.5 mm	<b>Lens:</b> Canon EF 50mm f/1.4
<b>Direction of view:</b> 170°	<b>Paper size:</b> 841 x 297 mm (half A1)	<b>Camera height:</b> 1.5 m
<b>Nearest turbine:</b> 10.22 km	<b>Correct printed image size:</b> 820 x 260 mm	<b>Date and time:</b> 29.07.2022 16:51

**Figure: 5.32g**  
Viewpoint 17: Balmaha Harbour  
Vale of Leven Wind Farm  
© Crown copyright. All rights reserved (2023). Licence number 0100031673



Photomontage: Proposed Development Lighting Assessment (2000cd Intensity). Nacelle lighting for all turbines.

View flat at a comfortable arm's length

<b>OS reference:</b>	241548 E 690784 N	<b>Horizontal field of view:</b>	53.5° (planar projection)	<b>Camera:</b>	Canon EOS 6D MKII
<b>Eye level:</b>	8.0 mAOD	<b>Principal distance:</b>	812.5 mm	<b>Lens:</b>	Canon EF 50mm f/1.4
<b>Direction of view:</b>	170°	<b>Paper size:</b>	841 x 297 mm (half A1)	<b>Camera height:</b>	1.5 m
<b>Nearest turbine:</b>	10.22 km	<b>Correct printed image size:</b>	820 x 260 mm	<b>Date and time:</b>	08.03.2023 18:37

**Figure: 5.32h**  
**Viewpoint 17: Balmaha Harbour**  
**Vale of Leven Wind Farm**  
© Crown copyright. All rights reserved (2023). Licence number 0100031673





Photomontage: Proposed Development Lighting Assessment (200cd Intensity). Nacelle lighting for all turbines.

View flat at a comfortable arm's length

<b>OS reference:</b>	241548 E 690784 N	<b>Horizontal field of view:</b>	53.5° (planar projection)	<b>Camera:</b>	Canon EOS 6D MKII
<b>Eye level:</b>	8.0 mAOD	<b>Principal distance:</b>	812.5 mm	<b>Lens:</b>	Canon EF 50mm f/1.4
<b>Direction of view:</b>	170°	<b>Paper size:</b>	841 x 297 mm (half A1)	<b>Camera height:</b>	1.5 m
<b>Nearest turbine:</b>	10.22 km	<b>Correct printed image size:</b>	820 x 260 mm	<b>Date and time:</b>	08.03.2023 18:37

**Figure: 5.32i**  
**Viewpoint 17: Balmaha Harbour**  
**Vale of Leven Wind Farm**  
© Crown copyright. All rights reserved (2023). Licence number 0100031673