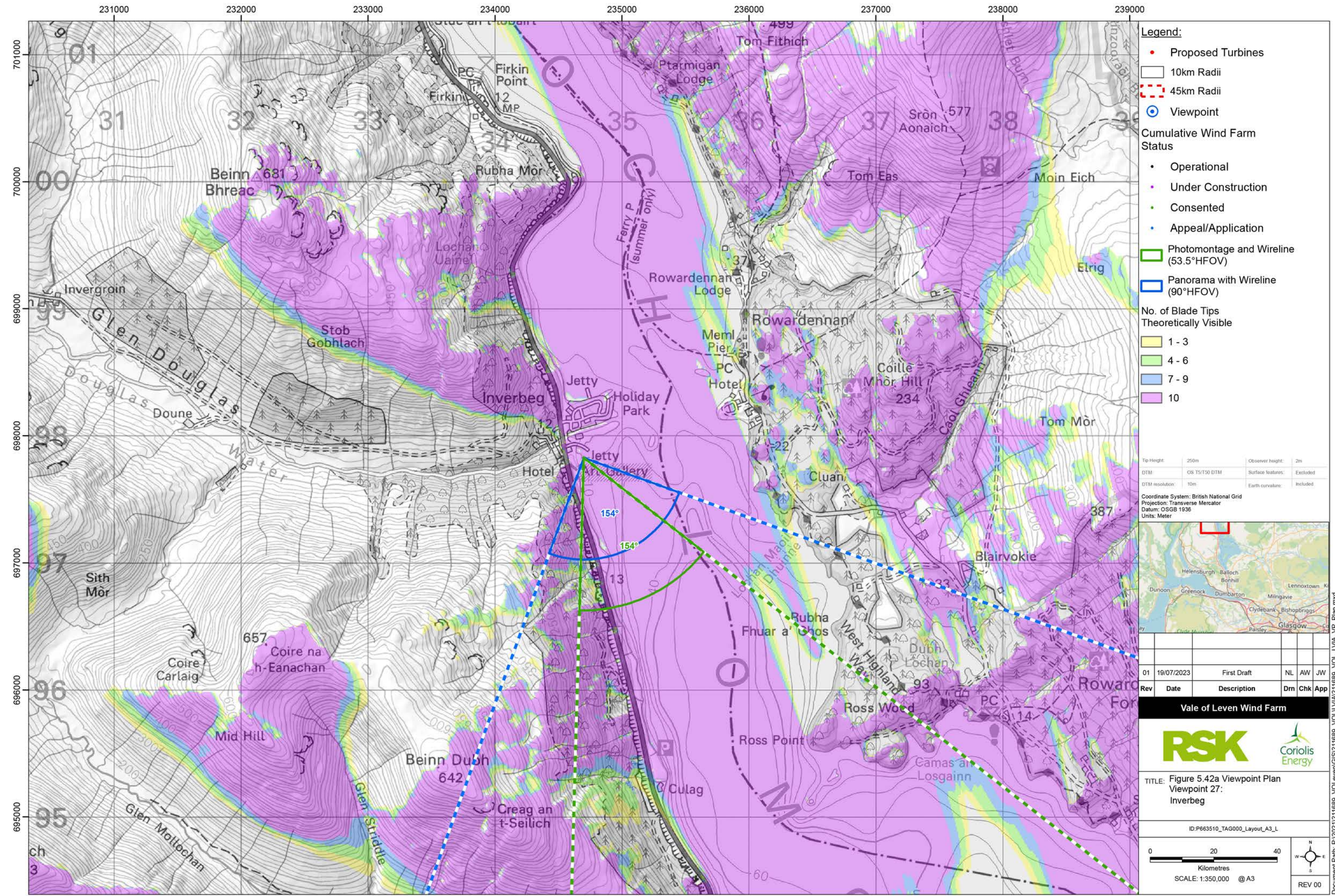


© OpenStreetMap (and) contributors, CC-BY-SA © Crown copyright and database rights (2023) Ordnance Survey 0100031673. Contains OS data © Crown copyright and database right (2023). Contains public sector information licensed under the Open Government Licence v3.0.

Cumulative Wind Farms and Location Plan 1:470,000 Scale



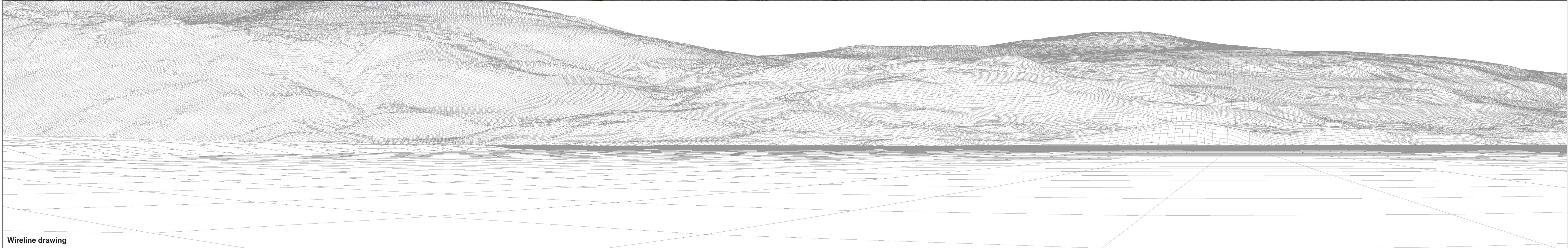
Viewpoint Location Plan with Horizontal Field of View 1:25,000 Scale

Document Path: P:\2023\121689_ValeofLeven\GIS\21689_ValeofLeven\GIS\21689_ValeofLeven\Layouts\VP_Plan.mxd



Baseline photograph

This image provides landscape and visual context only



Wireline drawing

OS reference: 234698 E 697827 N
 Eye level: 8.3 mAOD
 Direction of view: 64°
 Nearest turbine: 19.20 km

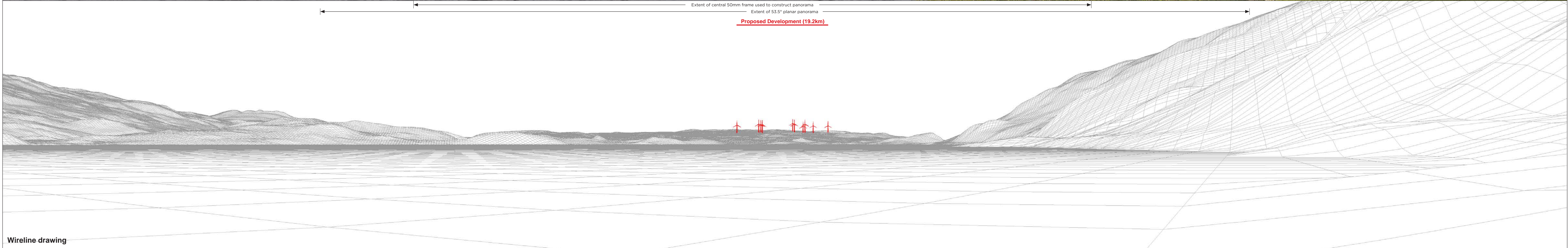
Horizontal field of view: 90° (cylindrical projection)
 Principal distance: 522 mm
 Paper size: 841 x 297 mm (half A1)
 Correct printed image size: 820 x 130 mm

Camera: Canon EOS 5D MKII
 Lens: Canon EF 50mm f/1.4
 Camera height: 1.5 m
 Date and time: 23.06.2022 17:32



Baseline photograph

This image provides landscape and visual context only



Wireline drawing

Proposed Development (19.2km)

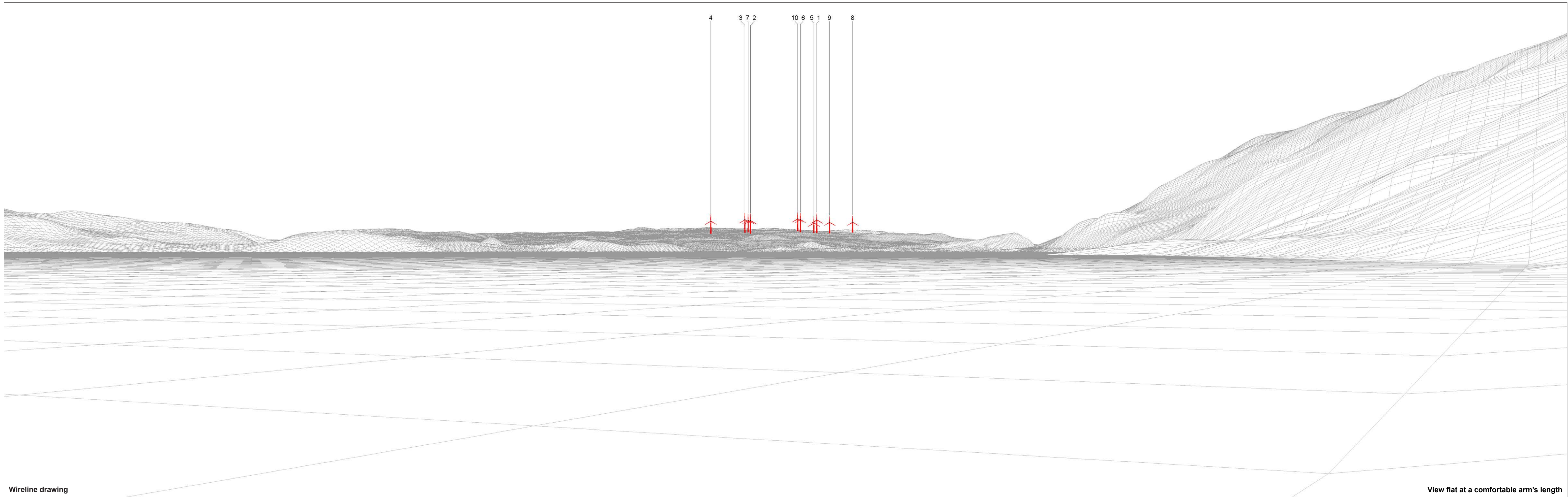
Extent of central 50mm frame used to construct panorama

Extent of 53.5° planar panorama

OS reference: 234698 E 697827 N
 Eye level: 8.3 mAOD
 Direction of view: 154°
 Nearest turbine: 19.20 km

Horizontal field of view: 90° (cylindrical projection)
 Principal distance: 522 mm
 Paper size: 841 x 297 mm (half A1)
 Correct printed image size: 820 x 130 mm

Camera: Canon EOS 5D MKII
 Lens: Canon EF 50mm f/1.4
 Camera height: 1.5 m
 Date and time: 23.06.2022 17:32



Wireline drawing

View flat at a comfortable arm's length

OS reference: 234698 E 697827 N
 Eye level: 8.3 mAOD
 Direction of view: 154°
 Nearest turbine: 19.20 km

Horizontal field of view: 53.5° (planar projection)
 Principal distance: 812.5 mm
 Paper size: 841 x 297 mm (half A1)
 Correct printed image size: 820 x 260 mm

Camera: Canon EOS 5D MKII
 Lens: Canon EF 50mm f/1.4
 Camera height: 1.5 m
 Date and time: 23.06.2022 17:32

● Turbine with nacelle lighting (All)

Figure: 5.42d
 Viewpoint 27: Inverbeg
 Vale of Leven Wind Farm
© Crown copyright. All rights reserved (2023). Licence number 0100031673



Photomontage: Proposed Development

View flat at a comfortable arm's length

| | | | | | |
|---------------------------|-------------------|------------------------------------|---------------------------|-----------------------|---------------------|
| OS reference: | 234698 E 697827 N | Horizontal field of view: | 53.5° (planar projection) | Camera: | Canon EOS 5D MKII |
| Eye level: | 8.3 mAOD | Principal distance: | 812.5 mm | Lens: | Canon EF 50mm f/1.4 |
| Direction of view: | 154° | Paper size: | 841 x 297 mm (half A1) | Camera height: | 1.5 m |
| Nearest turbine: | 19.20 km | Correct printed image size: | 820 x 260 mm | Date and time: | 23.06.2022 17:32 |

Figure: 5.42e
Viewpoint 27: Inverbeg
Vale of Leven Wind Farm
© Crown copyright. All rights reserved (2023). Licence number 0100031673