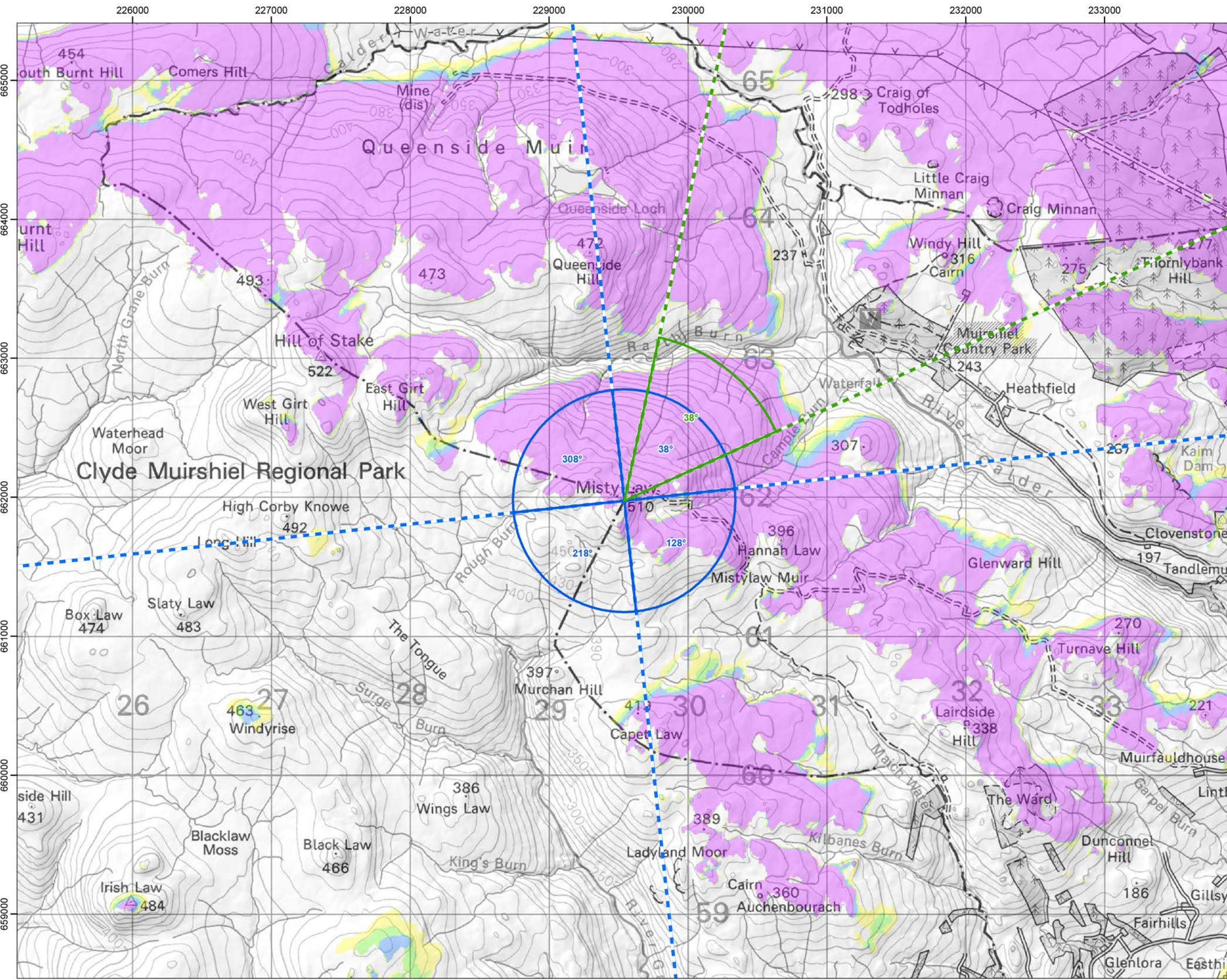


Cumulative Wind Farms and Location Plan 1:470,000 Scale



Viewpoint Location Plan with Horizontal Field of View 1:25,000 Scale

Legend:

- Proposed Turbines
- 10km Radii
- 45km Radii
- ⊙ Viewpoint

Cumulative Wind Farm Status

- Operational
- Under Construction
- Consented
- Appeal/Application

Photomontage and Wireline (53.5°HFOV)

Panorama with Wireline (90°HFOV)

No. of Blade Tips Theoretically Visible

- 1 - 3
- 4 - 6
- 7 - 9
- 10

Top Height: 250m | Observer Height: 2m
 DTM: OS T5150 DTM | Surface Features: Excluded
 DTM Resolution: 10m | Earth Curvature: Included

Coordinate System: British National Grid
 Projection: Transverse Mercator
 Datum: OSGB 1936
 Units: Meter

Rev	Date	Description	Drn	Chk	App
01	19/07/2023	First Draft	NL	AW	JW

Vale of Leven Wind Farm

RSK **Coriolis Energy**

TITLE: Figure 5.43a Viewpoint Plan
 Viewpoint 28:
 Misty Law

ID: P663510_TAG000_Layout_A3_L

0 20 40
 Kilometres
 SCALE: 1:350,000 @ A3

REV 00

© OpenStreetMap (and) contributors, CC-BY-SA © Crown copyright and database rights (2023) Ordnance Survey 0100031673. Contains OS data © Crown copyright and database right (2023). Contains public sector information licensed under the Open Government Licence v3.0.

Document Path: P:\2023\12\11689_ValeOfLeven\GIS\21689_ValeOfLeven\GIS\21689_Vol_LVA_VP_Plan.mxd



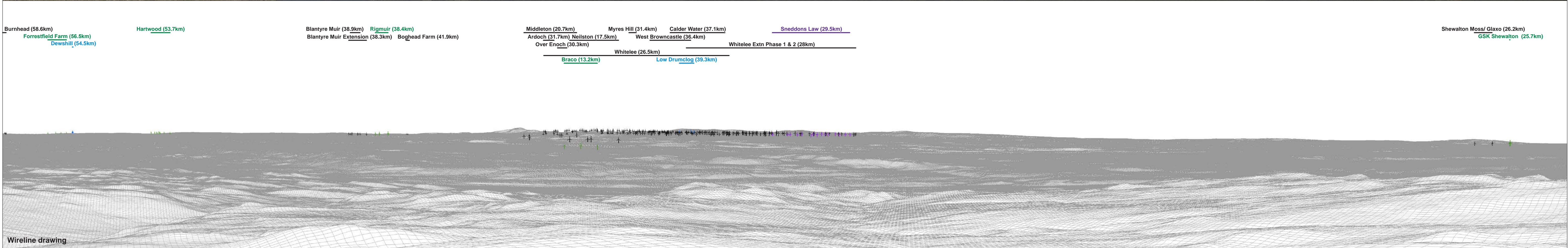
OS reference: 229540 E 661975 N	Horizontal field of view: 90° (cylindrical projection)	Camera: Canon EOS 6D MKII
Eye level: 508.0 mAOD	Principal distance: 522 mm	Lens: Canon EF 50mm f/1.4
Direction of view: 38°	Paper size: 841 x 297 mm (half A1)	Camera height: 1.5 m
Nearest turbine: 21.77 km	Correct printed image size: 820 x 130 mm	Date and time: 10.08.2022 10:34

Figure: 5.43b
Viewpoint 28: Misty Law
Vale of Leven Wind Farm
© Crown copyright. All rights reserved (2023). Licence number 0100031673



Baseline photograph

This image provides landscape and visual context only



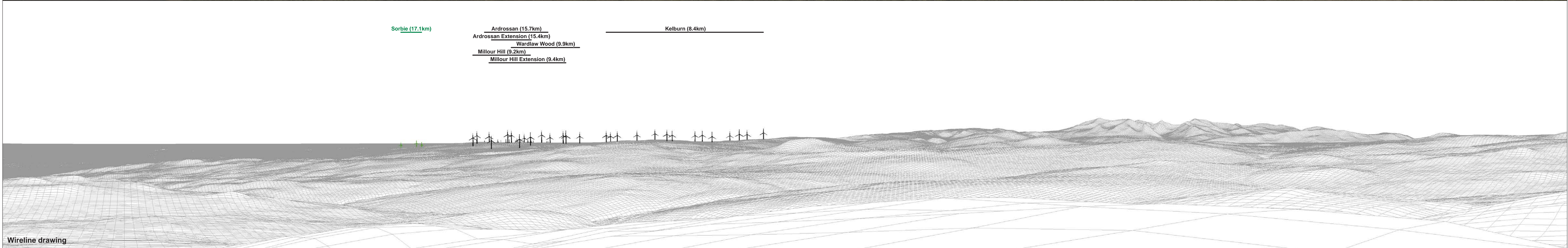
Wireline drawing

OS reference: 229540 E 661975 N	Horizontal field of view: 90° (cylindrical projection)	Camera: Canon EOS 6D MKII
Eye level: 508.0 mAOD	Principal distance: 522 mm	Lens: Canon EF 50mm f/1.4
Direction of view: 128°	Paper size: 841 x 297 mm (half A1)	Camera height: 1.5 m
Nearest turbine: 21.77 km	Correct printed image size: 820 x 130 mm	Date and time: 10.08.2022 10:34



Baseline photograph

This image provides landscape and visual context only



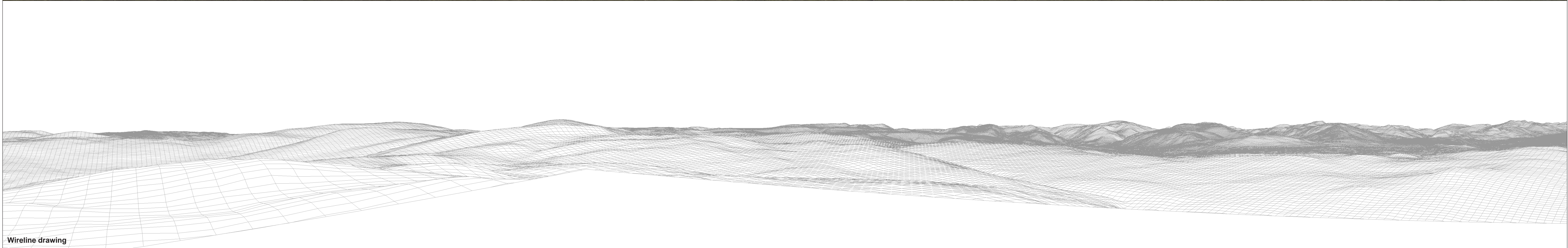
Wireline drawing

OS reference: 229540 E 661975 N	Horizontal field of view: 90° (cylindrical projection)	Camera: Canon EOS 6D MKII
Eye level: 508.0 mAOD	Principal distance: 522 mm	Lens: Canon EF 50mm f/1.4
Direction of view: 218°	Paper size: 841 x 297 mm (half A1)	Camera height: 1.5 m
Nearest turbine: 21.77 km	Correct printed image size: 820 x 130 mm	Date and time: 10.08.2022 10:34



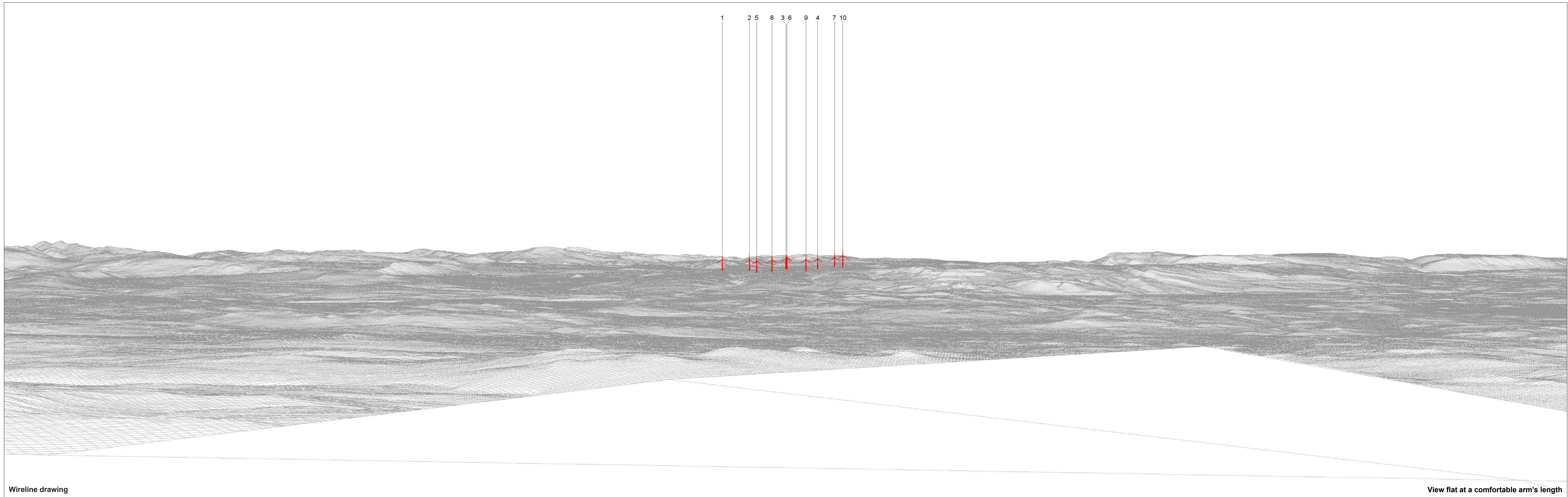
Baseline photograph

This image provides landscape and visual context only



Wireline drawing

OS reference: 229540 E 661975 N	Horizontal field of view: 90° (cylindrical projection)	Camera: Canon EOS 6D MKII
Eye level: 508.0 mAOD	Principal distance: 522 mm	Lens: Canon EF 50mm f/1.4
Direction of view: 308°	Paper size: 841 x 297 mm (half A1)	Camera height: 1.5 m
Nearest turbine: 21.77 km	Correct printed image size: 820 x 130 mm	Date and time: 10.08.2022 10:34



Wireline drawing

View flat at a comfortable arm's length

OS reference: 229540 E 661975 N
 Eye level: 508.0 mAOD
 Direction of view: 38°
 Nearest turbine: 21.77 km

Horizontal field of view: 53.5° (planar projection)
 Principal distance: 812.5 mm
 Paper size: 841 x 297 mm (half A1)
 Correct printed image size: 820 x 260 mm

Camera: Canon EOS 6D MKII
 Lens: Canon EF 50mm f/1.4
 Camera height: 1.5 m
 Date and time: 10.08.2022 10:34

● Turbine with nacelle lighting (All)

Figure: 5.43f
 Viewpoint 28: Misty Law
 Vale of Leven Wind Farm
© Crown copyright. All rights reserved (2023). Licence number 0100031673



Photomontage: Proposed Development

View flat at a comfortable arm's length

OS reference: 229540 E 661975 N	Horizontal field of view: 53.5° (planar projection)	Camera: Canon EOS 6D MKII	Figure: 5.43g Viewpoint 28: Misty Law Vale of Leven Wind Farm <small>© Crown copyright. All rights reserved (2023). Licence number 0100031673</small>
Eye level: 508.0 mAOD	Principal distance: 812.5 mm	Lens: Canon EF 50mm f/1.4	
Direction of view: 38°	Paper size: 841 x 297 mm (half A1)	Camera height: 1.5 m	
Nearest turbine: 21.77 km	Correct printed image size: 820 x 260 mm	Date and time: 10.08.2022 10:34	