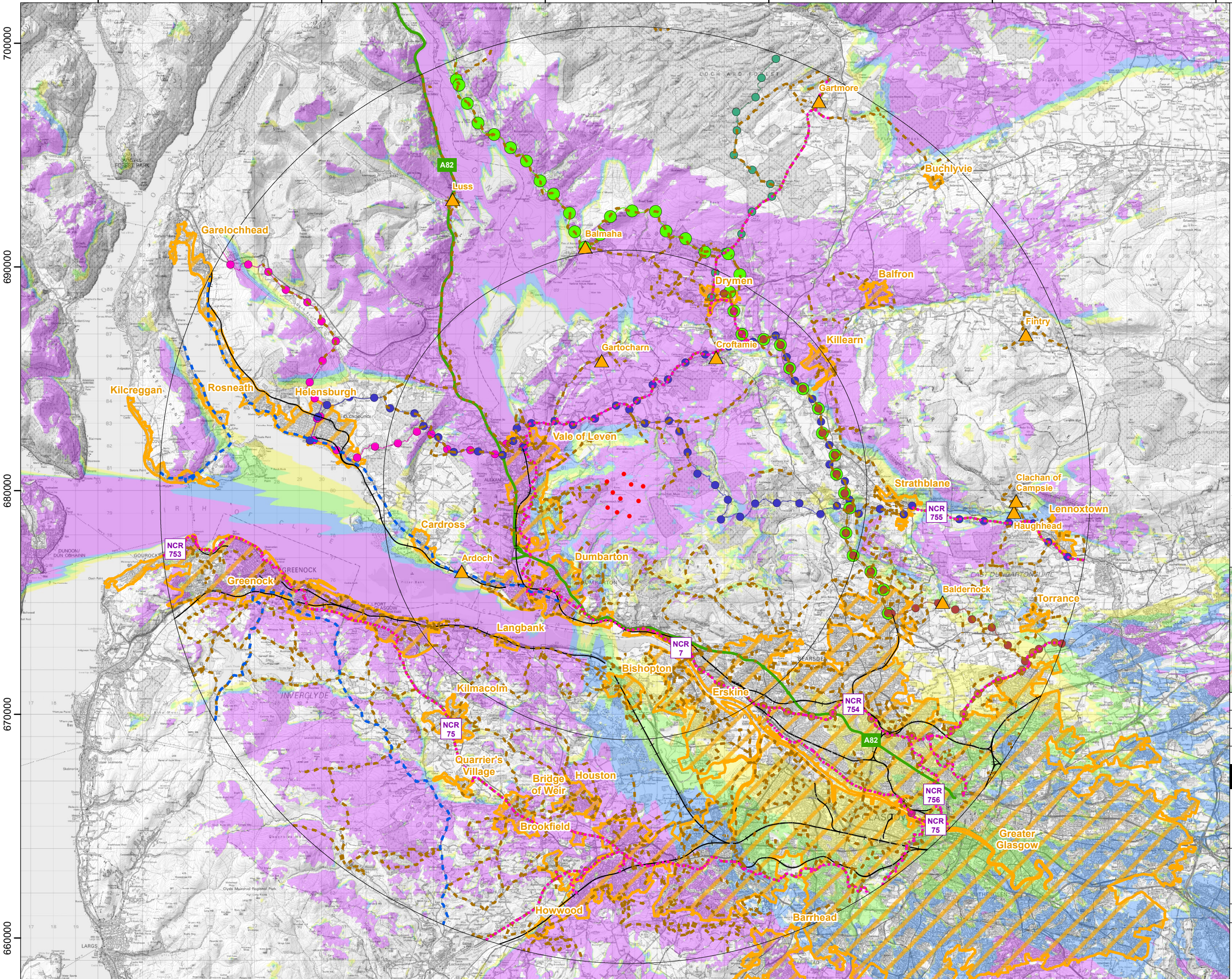


220000 230000 240000 250000 260000 270000



**Legend:**

- Proposed Turbines
- 10km Radii
- Core Path
- A Road
- Railway
- Scenic Driving Routes
- National Cycle Route (NCR)
- Clyde Walkway
- Forth & Clyde and Union Canal Towpaths
- John Muir Way
- Rob Roy Way
- Scottish National Trail
- Three Lochs Way
- West Highland Way
- ▲ Small Settlements
- Medium to Large Settlement
- Areas (National Records of Scotland 2018)

**No. of Blade Tips Theoretically Visible**

1 - 3
4 - 6
7 - 9
10

Blade tip: 220m      Observer height: 2m  
 DTM: OS T5/T50 DTM      Surface features: Excluded  
 DTM resolution: 10m      Earth curvature: Included

Coordinate System: British National Grid  
 Projection: Transverse Mercator  
 Datum: OSGB 1936  
 Units: Meter



Rev	Date	Description	Drn	Chk	App
01	12/12/2024	First Draft	SH	AW	JW

**Vale of Leven Wind Farm**

TITLE:  
 AI Figure 5.13b  
 Principal Visual Receptors Blade Tip ZTV  
 (20km Radius)

ID:P663510\_TAG000\_Layout\_A3\_L

SCALE: 1:160,000 @ A3

REV 00