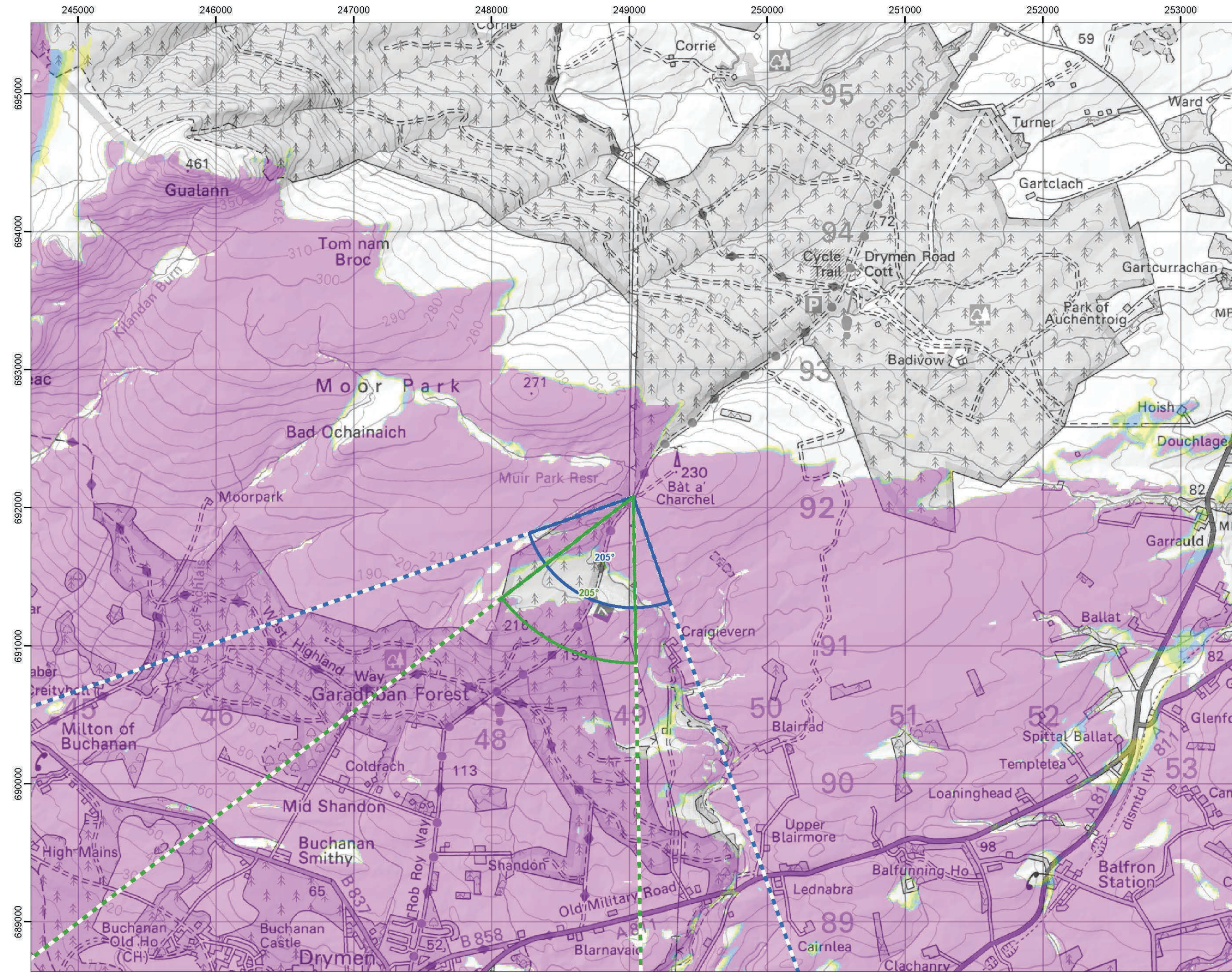


Cumulative Wind Farms and Location Plan 1:470,000 Scale



Viewpoint Location Plan with Horizontal Field of View 1:25,000 Scale

Legend:

- Proposed Turbines
- 10km Radii
- 45km Radii
- Viewpoint

Cumulative Wind Farm Status

- Operational
- Under Construction
- Consented
- Appeal/Application

Photomontage and Wireline (53.5°HFOV)

- Photomontage and Wireline (53.5°HFOV)
- Panorama with Wireline (90°HFOV)

No. of Blade Tips Theoretically Visible

- 1 - 3
- 4 - 6
- 7 - 9
- 10

Tip Height: 220m
Observer height: 2m
DTM: OS 1:50,000 DTM
Surface features: Excluded
DTM resolution: 10m
Earth curvature: Included
Coordinate System: British National Grid
Projection: Transverse Mercator
Datum: OSGB 1936
Units: Meter

Rev	Date	Description	Dm	Chk	App
01	12/12/2024	First Draft	NL	AW	JV

Vale of Leven Wind Farm

RSK **Coriolis Energy**

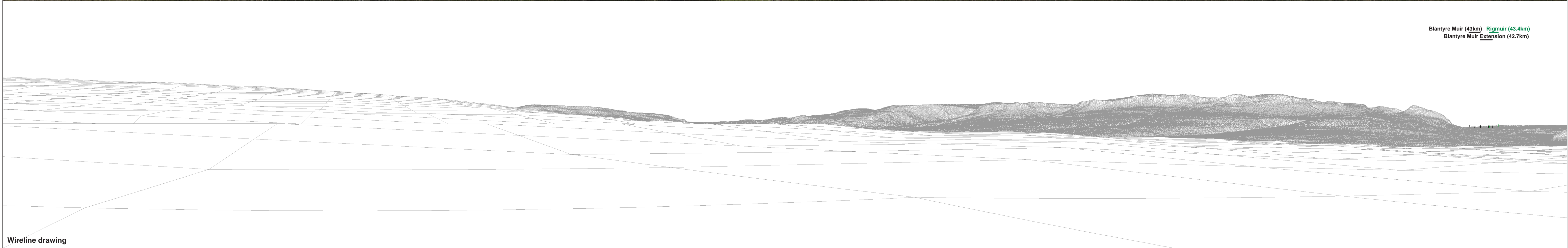
TITLE: AI Figure 5.36a Viewpoint Plan
Viewpoint 21:
Bat a' Charchel

ID: P663510_TAG000_Layout_A3_L

0 0.5 1
Kilometres
SCALE: 1:350,000 @A3
REV 00

© OpenStreetMap (and) contributors, CC-BY-SA © Crown copyright and database rights (2024) Ordnance Survey 0100091673. Contains OS data © Crown copyright and database right (2024). Contains public sector information licensed under the Open Government Licence v3.0.

Document Path: P:\0021211889_ValeofLeven\GIS\211889_ValeofLeven\AI_VA_VF_Plan.mxd



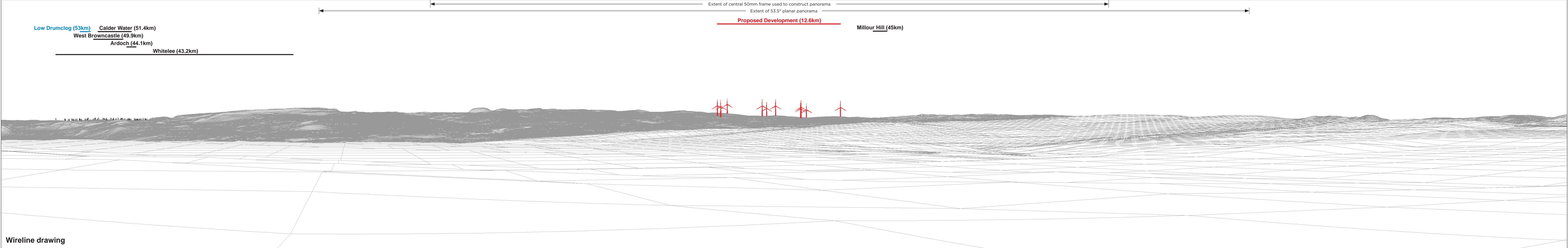
OS reference: 249029 E 692077 N	Horizontal field of view: 90° (cylindrical projection)	Camera: Canon EOS 6D MKII
Eye level: 210.0 mAOD	Principal distance: 522 mm	Lens: Canon EF 50mm f/1.4
Direction of view: 115°	Paper size: 841 x 297 mm (half A1)	Camera height: 1.5 m
Nearest turbine: 12.60 km	Correct printed image size: 820 x 130 mm	Date and time: 27.07.2022 10:37

AI Figure: 5.36b
Viewpoint 21: Bat a Charchel
Vale of Leven Wind Farm
© Crown copyright. All rights reserved (2023). Licence number 0100031673



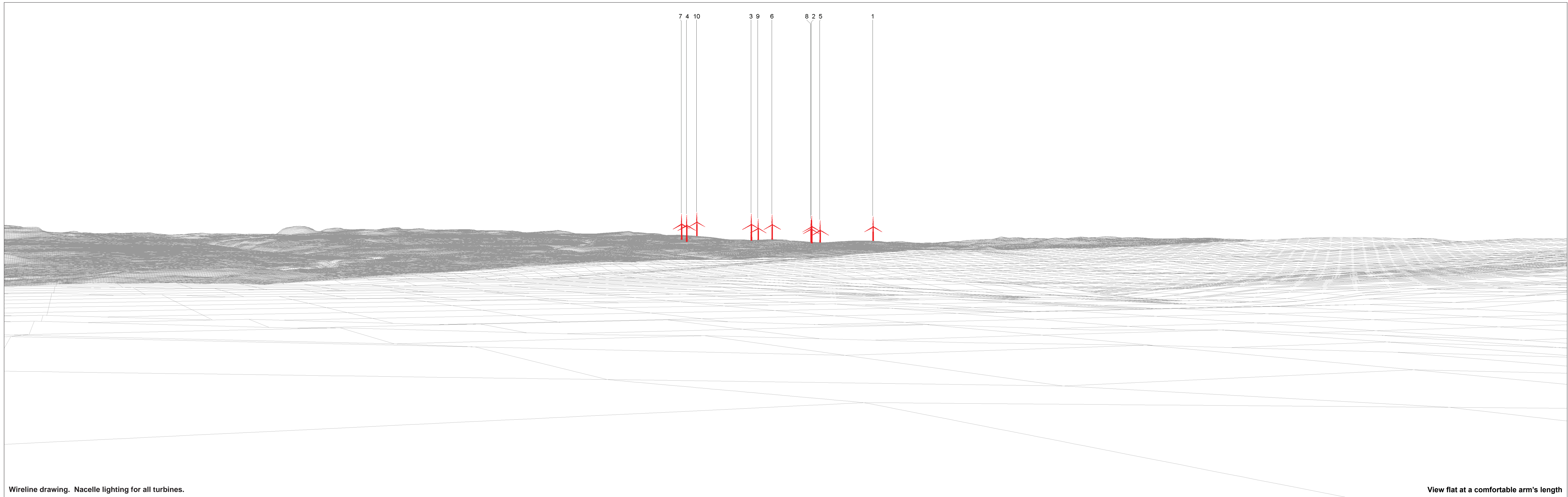
Baseline photograph

This image provides landscape and visual context only



Wireline drawing

OS reference: 249029 E 692077 N	Horizontal field of view: 90° (cylindrical projection)	Camera: Canon EOS 6D MKII
Eye level: 210.0 mAOB	Principal distance: 522 mm	Lens: Canon EF 50mm f/1.4
Direction of view: 205°	Paper size: 841 x 297 mm (half A1)	Camera height: 1.5 m
Nearest turbine: 12.60 km	Correct printed image size: 820 x 130 mm	Date and time: 27.07.2022 10:37



Wireline drawing. Nacelle lighting for all turbines.

View flat at a comfortable arm's length

OS reference: 249029 E 692077 N	Horizontal field of view: 53.5° (planar projection)	Camera: Canon EOS 6D MKII
Eye level: 210.0 mAOD	Principal distance: 812.5 mm	Lens: Canon EF 50mm f/1.4
Direction of view: 205°	Paper size: 841 x 297 mm (half A1)	Camera height: 1.5 m
Nearest turbine: 12.60 km	Correct printed image size: 820 x 260 mm	Date and time: 27.07.2022 10:37



Photomontage: Proposed Development

View flat at a comfortable arm's length

OS reference: 249029 E 692077 N	Horizontal field of view: 53.5° (planar projection)	Camera: Canon EOS 6D MKII
Eye level: 210.0 mAOD	Principal distance: 812.5 mm	Lens: Canon EF 50mm f/1.4
Direction of view: 205°	Paper size: 841 x 297 mm (half A1)	Camera height: 1.5 m
Nearest turbine: 12.60 km	Correct printed image size: 820 x 260 mm	Date and time: 27.07.2022 10:37

AI Figure: 5.36e
Viewpoint 21: Bat a Charchel
Vale of Leven Wind Farm
© Crown copyright. All rights reserved (2023). Licence number 0100031673