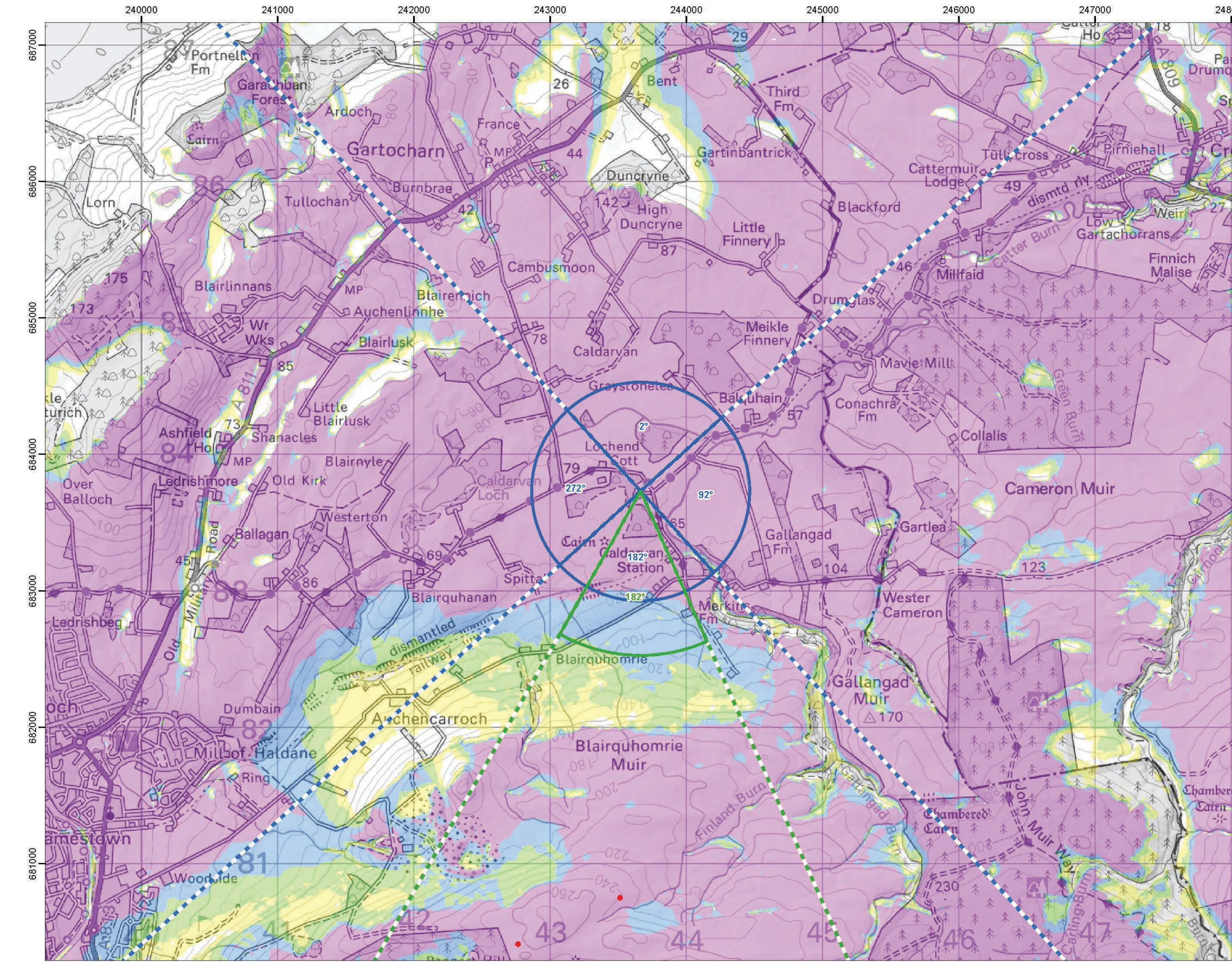


Cumulative Wind Farms and Location Plan 1:470,000 Scale



Viewpoint Location Plan with Horizontal Field of View 1:25,000 Scale

Legend

- Proposed Turbines
- 10km Radii
- 45km Radii
- Viewpoint

Cumulative Wind Farm Status

- Operational
- Under Construction
- Consented
- Appeal/Application

Photomontage and Wireline (53.5°HFOV)

Panorama with Wireline (90°HFOV)

No. of Blade Tips Theoretically Visible

- 1 - 3
- 4 - 6
- 7 - 9
- 10

Map Details:

Top Height: 220m
Observer height: 2m
DTM: OS T9150 DTM
Surface features: Excluded
DTM resolution: 10m
Earth curvature: Included

Coordinate System: British National Grid
Projection: Transverse Mercator
Datum: OSGB 1936
Units: Meter

Revision Table:

Rev	Date	Description	Dm	Chk	App
01	12/12/2024	First Draft	NL	AW	JW

Vale of Leven Wind Farm

RSK **Coriolis Energy**

TITLE: AI Figure 10.15a Viewpoint Plan
Cultural Heritage Viewpoint 13:
View from LB43911 Auchenlarch With Stables and Gatepiers

ID: P663510_TAG000_Layout_AS_L

Scale: 1:350,000 @A3

Scale Bar: 0, 0.5, 1 Kilometres

North Arrow: N, S, E, W

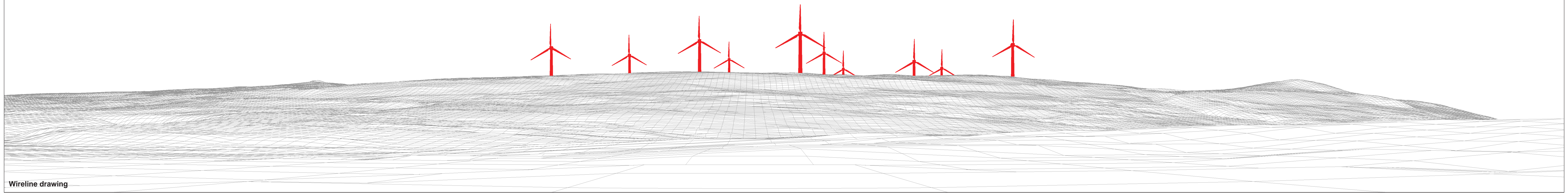
REV 00

Montage included

© OpenStreetMap (and) contributors, CC-BY-SA © Crown copyright and database rights (2024) Ordnance Survey 0100091673. Contains OS data © Crown copyright and database right (2024). Contains public sector information licensed under the Open Government Licence v3.0.

Document Path: P:\0021211689_ValeofLeven\GIS\211689_ValeofLeven\AI\10.15a_VFP_LVA_AVP_CH_Plan.mxd

No Photography | Wireline only View



Wireline drawing

OS reference: 243665 E 683727 N
Eye level: 75.5 mAOD
Direction of view: 182°
Nearest turbine: 2.98 km

Horizontal field of view: 90° (cylindrical projection)
Principal distance: 522 mm
Paper size: 841 x 297 mm (half A1)
Correct printed image size: 820 x 130 mm

Camera: N/A
Lens: N/A
Camera height: 1.5 m
Date and time: N/A

Viewpoint 13: View from LB43911 Auchenlarich With Stables and Gatepiers

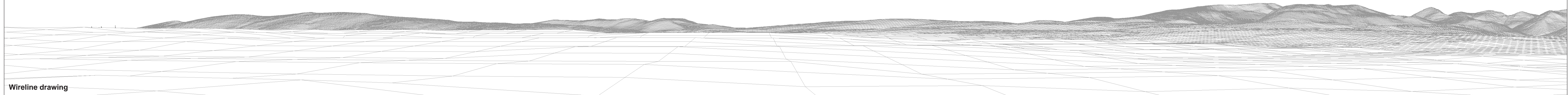
AI Figure: 8.15b

Vale of Leven Wind Farm

© Crown copyright. All rights reserved (2024). Licence number 0100031673

No Photography | Wireline only View

Corlic Hill (Inverclyde) (17.5km)



Wireline drawing

OS reference: 243665 E 683727 N
Eye level: 75.5 mAOD
Direction of view: 272°
Nearest turbine: 2.98 km

Horizontal field of view: 90° (cylindrical projection)
Principal distance: 522 mm
Paper size: 841 x 297 mm (half A1)
Correct printed image size: 820 x 130 mm

Camera: N/A
Lens: N/A
Camera height: 1.5 m
Date and time: N/A

Viewpoint 13: View from LB43911 Auchenlarich With Stables and Gatepiers

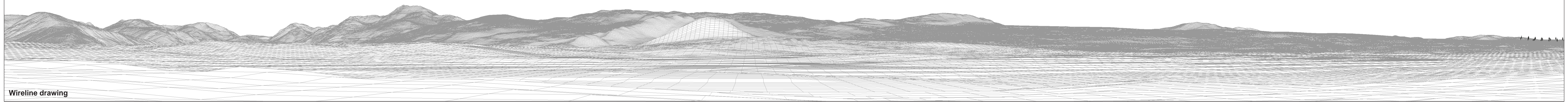
AI Figure: 8.15c

Vale of Leven Wind Farm

© Crown copyright. All rights reserved (2024). Licence number 0100031673

No Photography | Wireline only View

Braes of Doune (38.5km)



Wireline drawing

OS reference:	243665 E 683727 N	Horizontal field of view:	90° (cylindrical projection)	Camera:	N/A
Eye level:	75.5 mAOD	Principal distance:	522 mm	Lens:	N/A
Direction of view:	2°	Paper size:	841 x 297 mm (half A1)	Camera height:	1.5 m
Nearest turbine:	2.98 km	Correct printed image size:	820 x 130 mm	Date and time:	N/A

Viewpoint 13: View from LB43911 Auchenlarich With Stables and Gatepiers
AI Figure: 8.15d

Vale of Leven Wind Farm

© Crown copyright. All rights reserved (2024). Licence number 0100031673

No Photography | Wireline only View

Braes of Doune (38.5km)

Earlsburn (25.2km)

Shelloch (22.8km)

Earlsburn Extension (26.6km)

Wireline drawing

OS reference: 243665 E 683727 N
Eye level: 75.5 mAOD
Direction of view: 92°
Nearest turbine: 2.98 km

Horizontal field of view: 90° (cylindrical projection)
Principal distance: 522 mm
Paper size: 841 x 297 mm (half A1)
Correct printed image size: 820 x 130 mm

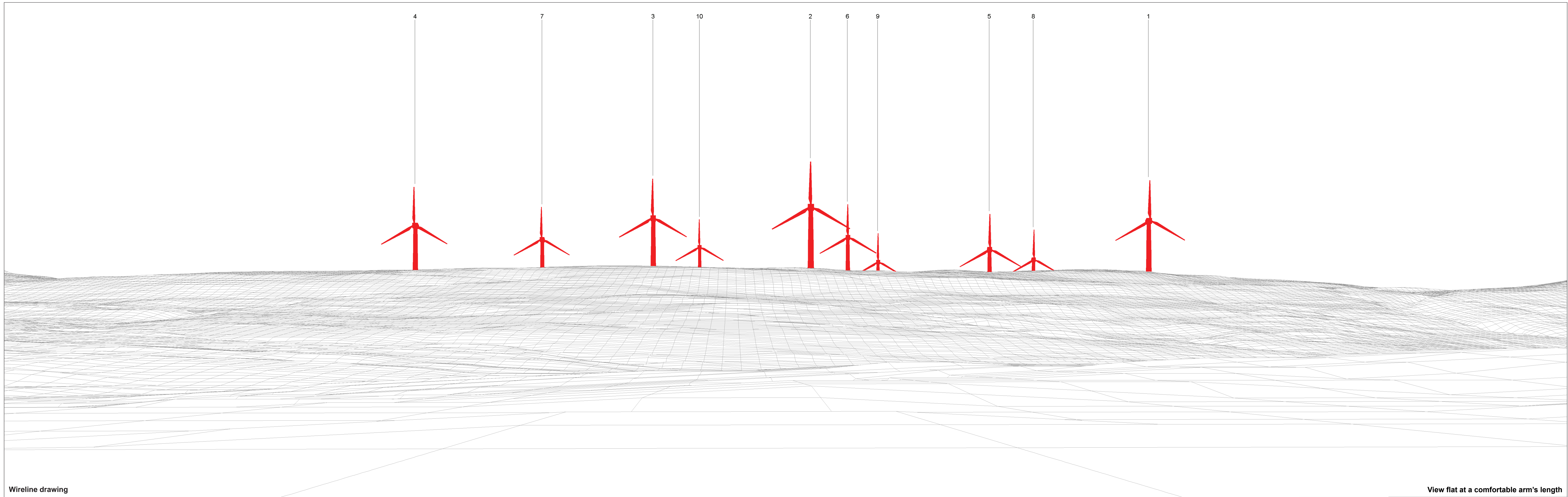
Camera: N/A
Lens: N/A
Camera height: 1.5 m
Date and time: N/A

Viewpoint 13: View from LB43911 Auchenlarich With Stables and Gatepiers

AI Figure: 8.15e

Vale of Leven Wind Farm

© Crown copyright. All rights reserved (2024). Licence number 0100031673



Wireline drawing

View flat at a comfortable arm's length

OS reference: 243665 E 683727 N
 Eye level: 75.5 mAOD
 Direction of view: 182°
 Nearest turbine: 2.98 km

Horizontal field of view: 53.5° (planar projection)
 Principal distance: 812.5 mm
 Paper size: 841 x 297 mm (half A1)
 Correct printed image size: 820 x 260 mm

Camera: N/A
 Lens: N/A
 Camera height: 1.5 m
 Date and time: N/A

Viewpoint 13: View from LB43911 Auchenlarich With Stables and Gatepiers

Vale of Leven Wind Farm

© Crown copyright. All rights reserved (2024). Licence number 0100031673

AI Figure: 8.15f